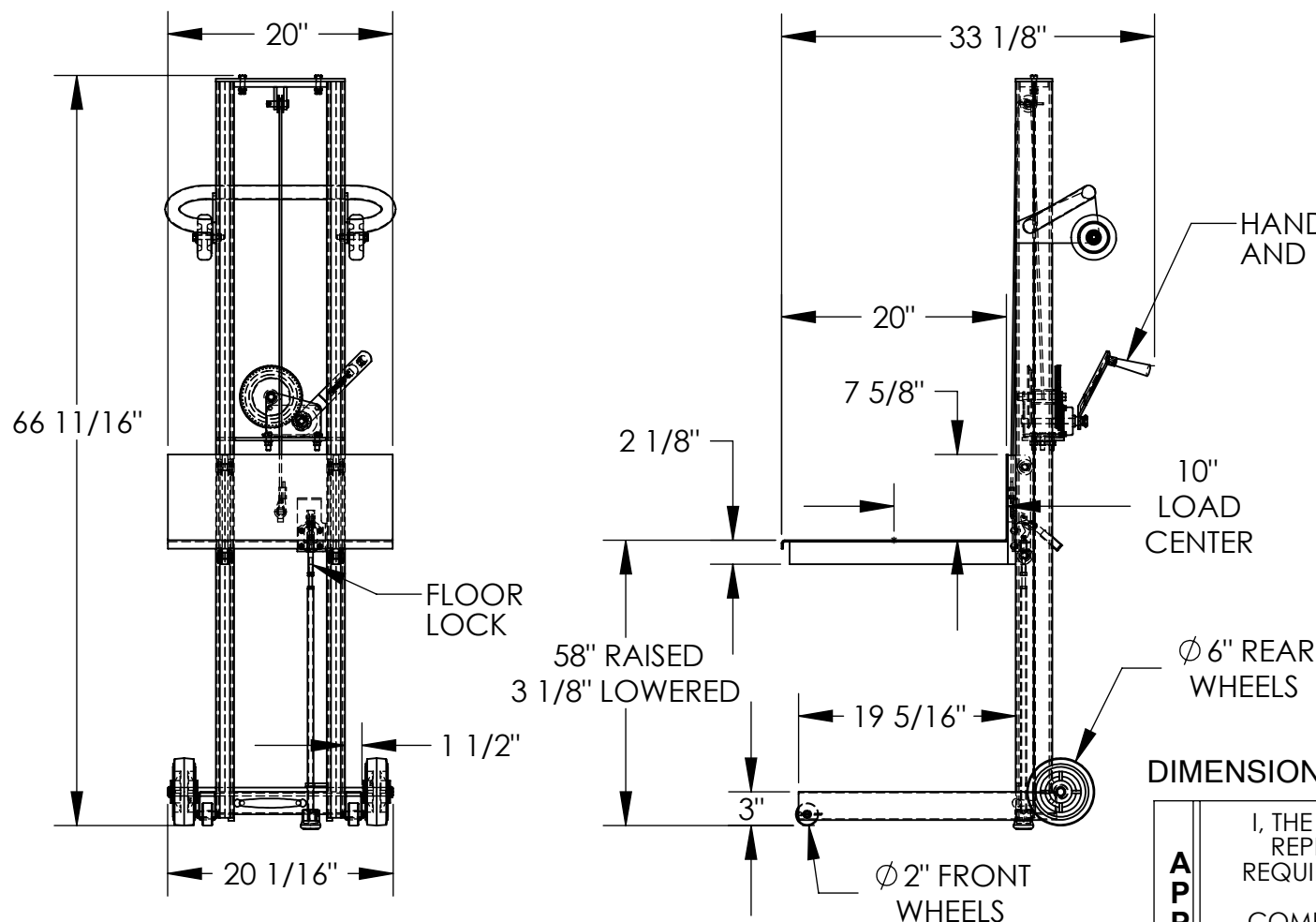


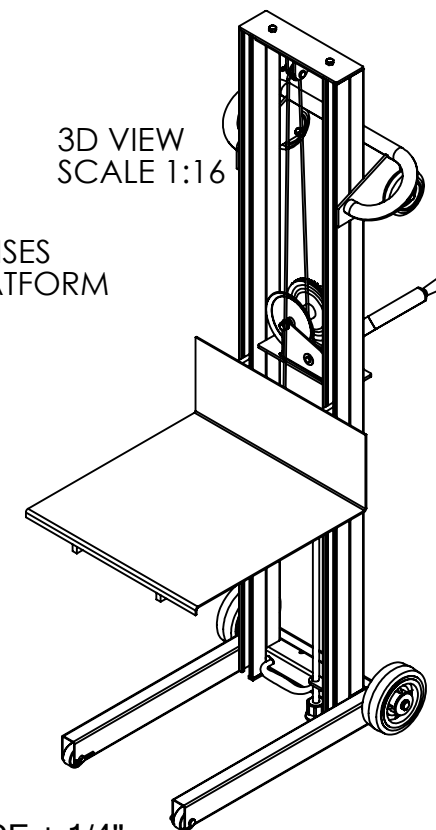
LITE LOAD LIFT - LLW-202058-FWFL

APPROX WEIGHT: 155.87 lbs.
DOES NOT INCLUDE WEIGHT OF POWER OR PACKAGING!!!

*** ANY ADDITIONS, DELETIONS, OR OMISSIONS MUST BE CORRECTED ON THIS DRAWING AS THIS DRAWING WILL BE CONSIDERED ALL INCLUSIVE ***
ALL GRAPHICS PROVIDED ARE FOR REFERENCE ONLY. IF CERTAIN DIMENSIONS ARE CRITICAL PLEASE VERIFY THOSE DIMENSIONS WITH YOUR SALESPERSON



3D VIEW
SCALE 1:16



DIMENSION TOLERANCE $\pm 1/4"$

STANDARD FEATURES

MODEL NUMBER: LLW-202058-FWFL
CAPACITY: 400 LBS.
PLATFORM WIDTH: 20"
PLATFORM LENGTH: 20"
OVERALL WIDTH: 20 1/16"
OVERALL LENGTH: 33 1/8"
OVERALL HEIGHT: 66 11/16"
RAISED HEIGHT: 58"
LOWERED HEIGHT: 3 1/8"
HAND WINCH OPERATION
HAND OPERATED FLOOR LOCK
STEEL CONSTRUCTION
TOUGH BAKED IN POWDER COATED BLUE FINISH

SPECIAL FEATURES

NONE

APPROVAL

I, THE UNDERSIGNED, AGREE THAT THE PRODUCT AS REPRESENTED SATISFIES DESIGN AND DIMENSION REQUIREMENTS. I ALSO ACKNOWLEDGE MY DUTY TO CONFIRM PRODUCT AND INSTALLATION COMPLIANCE WITH ALL APPLICABLE FEDERAL, STATE AND LOCAL REGULATIONS AND STANDARDS.
UNITS REQUIRING APPROVAL DRAWINGS OR MODIFIED ARE NON-RETURNABLE
[] As drawn [] As marked

Signed: _____ Date: _____

Printed Name: _____

LEAD TIME WILL START UPON RECEIPT OF SIGNED APPROVAL DRAWING

| | | |
|----------------------|--|------------|
| DISTRIBUTOR'S NAME: | | P.O.# |
| VESTIL MANUFACTURING | | X |
| DRAWN BY: KY | | W.O.# |
| DATE: 8/24/05 | | X |
| REFERENCE: X | | SALES: X |
| SCALE: 1:16 | | FILE NAME: |
| QUOTED LEAD TIME: X | | 21-007-157 |
| QUOTE # X | | |