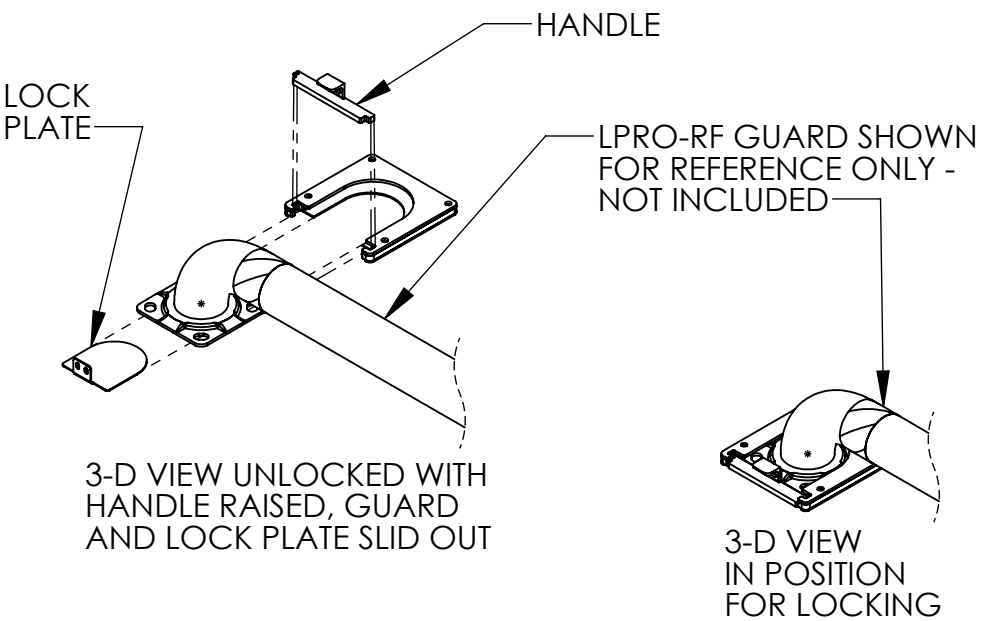
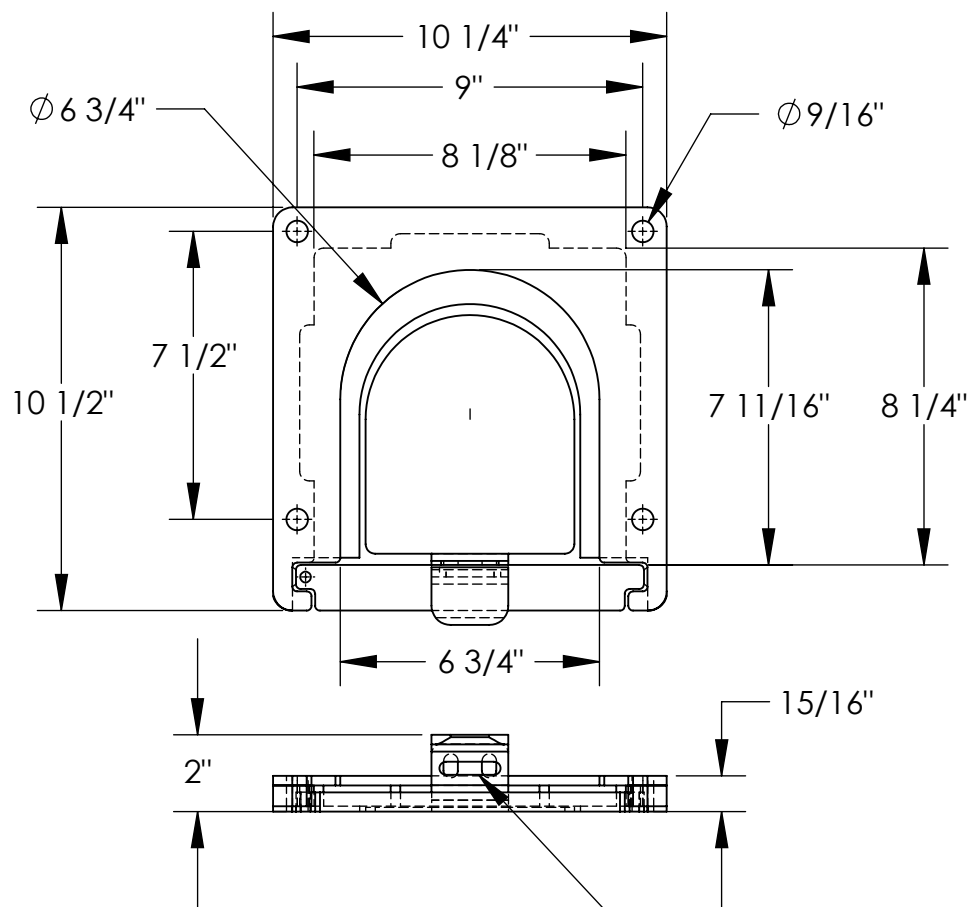


APPROX WEIGHT: 12 lbs.  
DOES NOT INCLUDE WEIGHT OF POWER OR PACKAGING!!!

# SURFACE MOUNTED REMOVABLE GUARD BASE - LPRO-RF-BASE

\*\*\* ANY ADDITIONS, DELETIONS, OR OMISSIONS MUST BE CORRECTED ON THIS DRAWING AS THIS DRAWING WILL BE CONSIDERED ALL INCLUSIVE \*\*\*  
ALL GRAPHICS PROVIDED ARE FOR REFERENCE ONLY. IF CERTAIN DIMENSIONS ARE CRITICAL PLEASE VERIFY THOSE DIMENSIONS WITH YOUR SALESPERSON



## STANDARD FEATURES

- MODEL NUMBER IS LPRO-RF-BASE
- OVERALL LENGTH IS 10 1/2"
- OVERALL HEIGHT IS 2"
- OVERALL WIDTH IS 10 1/4"
- USABLE WIDTH IS 6 3/4"
- FOR USE WITH 4 1/2" O.D.
- LPRO-RF RACK GUARDS
- GUARD IS EASILY INSERTED INTO BASE FOR INSTALLATION
- BASE MAY BE LOCKED WITH A PADLOCK (NOT PROVIDED) TO PREVENT GUARD REMOVAL
- BASE PLATE INCLUDES FOUR PRE-DRILLED MOUNTING HOLES
- ZINC COATED STEEL CONSTRUCTION

## SPECIAL FEATURES

NONE

LOCK ATTACHMENT LOCATION (SECURES LOCK PLATE TO HANDLE)

DIMENSION TOLERANCE  $\pm 1/4"$

APPROVAL	I, THE UNDERSIGNED, AGREE THAT THE PRODUCT AS REPRESENTED SATISFIES DESIGN AND DIMENSION REQUIREMENTS. I ALSO ACKNOWLEDGE MY DUTY TO CONFIRM PRODUCT AND INSTALLATION COMPLIANCE WITH ALL APPLICABLE FEDERAL, STATE AND LOCAL REGULATIONS AND STANDARDS.	
	<b>ANY MODIFIED UNITS ARE NON-RETURNABLE</b>	
	[ ] As drawn [ ] As marked	
	Signed: _____ Date: _____	
Printed Name: _____		
LEAD TIME WILL START UPON RECEIPT OF SIGNED APPROVAL DRAWING		

FOR INTERNAL USE ONLY PROJECT SIGN OFF	
SALES	
ENG.	
FAB.	
POWER	

DISTRIBUTOR'S NAME:		P.O.#
VESTIL MANUFACTURING		X
W.O.#		X
DRAWN BY: MTS	DATE: 09/21/2017	SALES: X
REFERENCE: X	SCALE: 1:5	FILE NAME:
QUOTED LEAD TIME: X	QUOTE # X	23-007-632-001