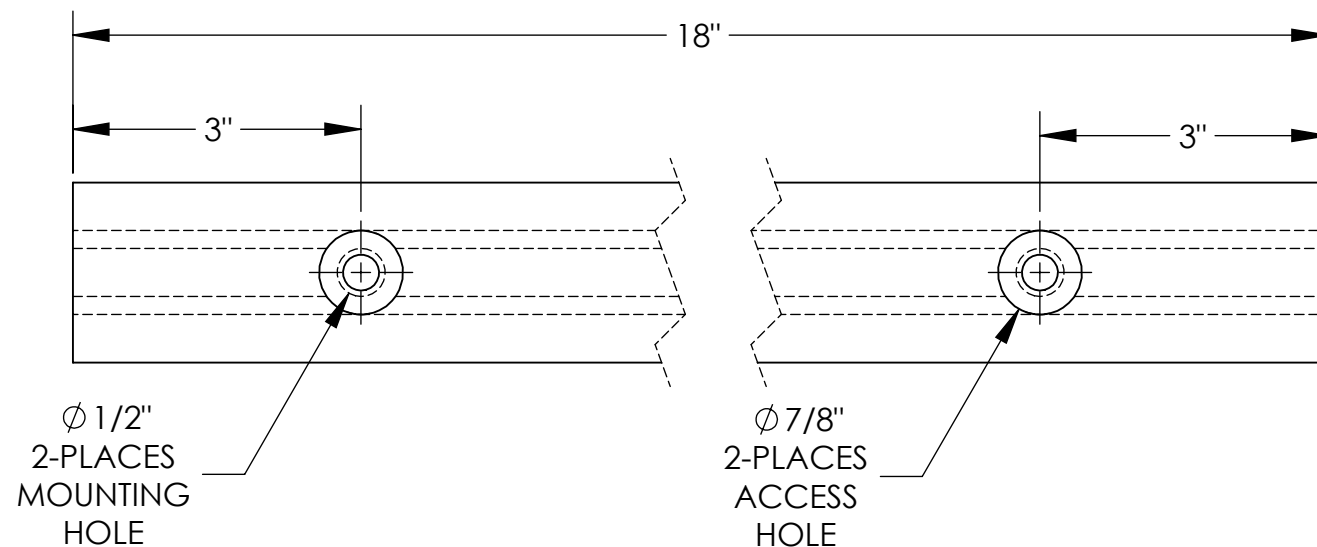
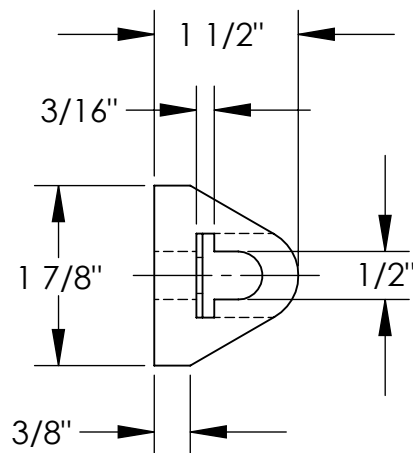


EXTRUDED RUBBER BUMPER - M-2-18

APPROX WEIGHT: 1 lbs.
DOES NOT INCLUDE WEIGHT OF POWER OR PACKAGING!!!

*** ANY ADDITIONS, DELETIONS, OR OMISSIONS MUST BE CORRECTED ON THIS DRAWING AS THIS DRAWING WILL BE CONSIDERED ALL INCLUSIVE ***

ALL GRAPHICS PROVIDED ARE FOR REFERENCE ONLY. IF CERTAIN DIMENSIONS ARE CRITICAL PLEASE VERIFY THOSE DIMENSIONS WITH YOUR SALESPERSON



STANDARD FEATURES

MODEL NUMBER IS: M-2-18
OVERALL WIDTH IS: 1 7/8"
OVERALL LENGTH IS: 18"
OVERALL PROJECTION IS: 1 1/2"
NUMBER OF MOUNTING HOLES: 2
MOUNTING HOLE SIZE: Ø1/2"
ACCESS HOLE SIZE: Ø7/8"
DUROMETER READING: A70 ± 5
TENSIL: 1850 PSI
ELONGATION: 220%
TEAR STRENGTH: 229 LBS
IMPACT RESISTANCE: 75%
BUMPER COLOR: BLACK

SPECIAL FEATURES

NONE

DIMENSION TOLERANCE ± 3/4"

APPROVAL

I, THE UNDERSIGNED, AGREE THAT THE PRODUCT AS REPRESENTED SATISFIES DESIGN AND DIMENSION REQUIREMENTS. I ALSO ACKNOWLEDGE MY DUTY TO CONFIRM PRODUCT AND INSTALLATION COMPLIANCE WITH ALL APPLICABLE FEDERAL, STATE AND LOCAL REGULATIONS AND STANDARDS.

ANY MODIFIED UNITS ARE NON-RETURNABLE

[] As drawn [] As marked

Signed: _____ Date: _____

Printed Name: _____

LEAD TIME WILL START UPON RECEIPT OF SIGNED APPROVAL DRAWING

FOR INTERNAL USE ONLY PROJECT SIGN OFF	
SALES	
ENG.	
FAB.	
POWER	

DISTRIBUTOR'S NAME:		P.O.#
VESTIL MANUFACTURING		X
DRAWN BY: JWW		W.O.#
DATE: 04/25/19		X
REFERENCE: X	SCALE: 1:2	SALES: X
QUOTED LEAD TIME: X	QUOTE # X	FILE NAME:
		29-007-099