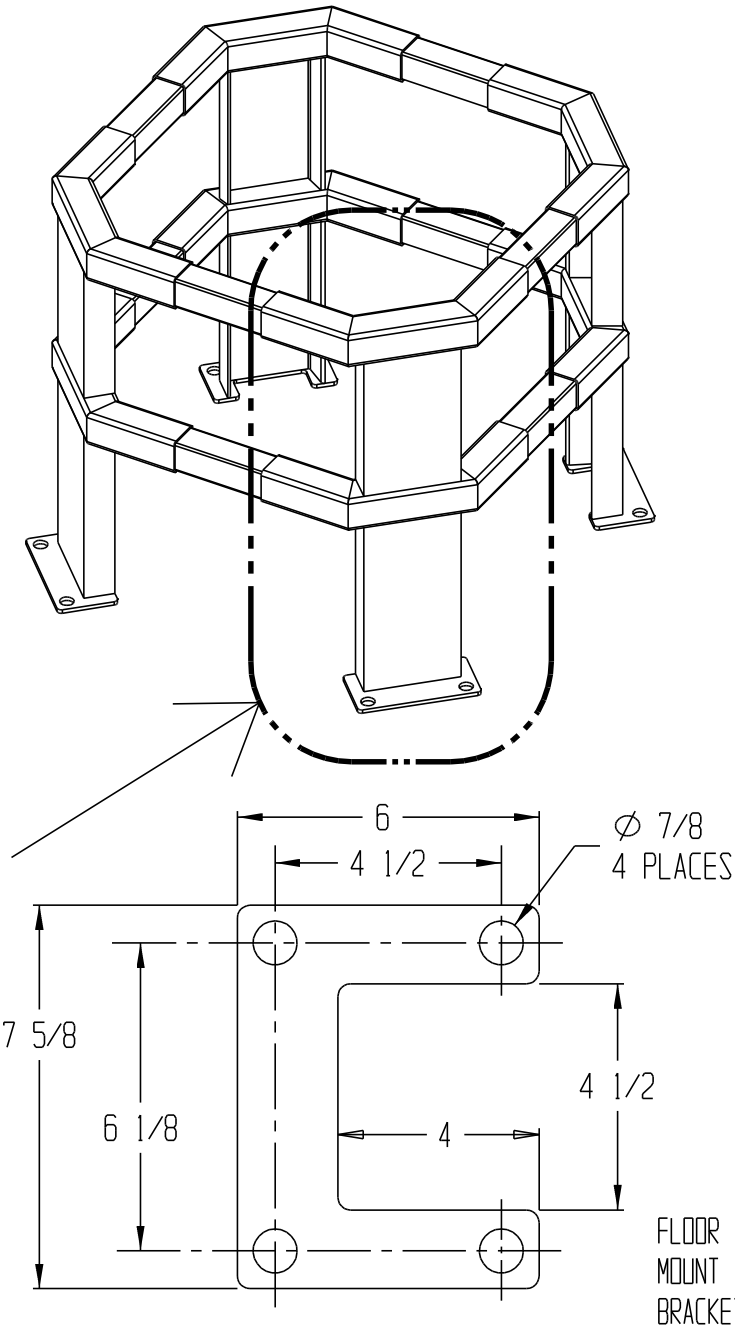
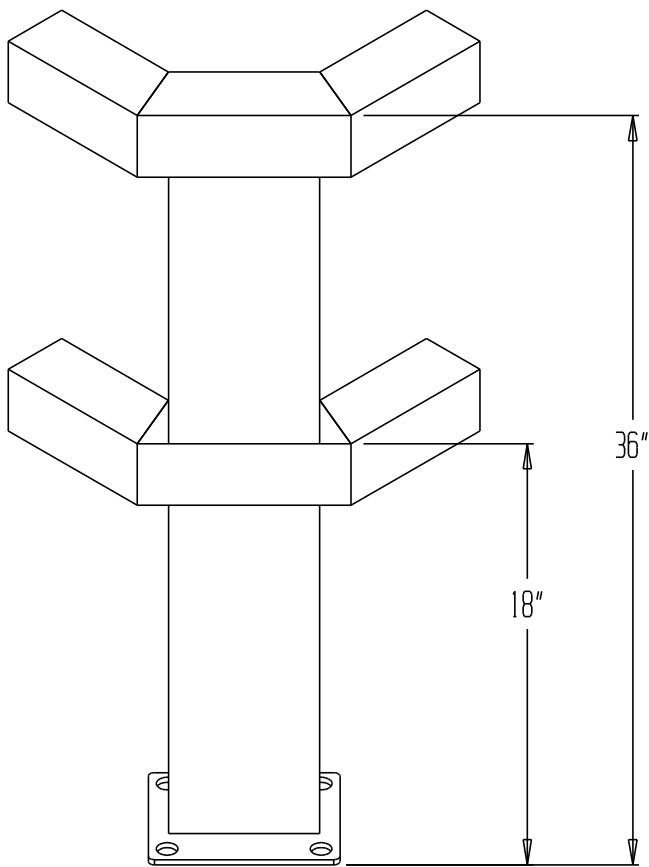


MODULAR GUARDS - CORNER POST, DOUBLE MG-CP-36-2

** Any additions, deletions or omissions must be corrected on this drawing, as this drawing will be considered all inclusive. **
 ** All graphics provided are for reference only. If certain dimensions are critical please verify those dimensions with your salesperson **



STANDARD FEATURES

- MODEL NUMBER: MG-CP-36-2
- DOUBLE CORNER POST
- OVERALL HT: 36"
- MID RAIL: 18"
- FRAME UPRIGHT: STRUCTURAL C- CHANNEL
- FRAME GUARD: 3 x 3 SQUARE TUBE
- TOUGH BAKED IN POWDER COATED YELLOW FINISH
- COMES WITH FOUR (4) 11207 BOLTS

SPECIAL FEATURES

NONE

SCALE - 1:4
 DIM. TOLERANCE ±1/4"

FOR INTERNAL USE ONLY PROJECT SIGN OFF	
SALES	
ENG	
FAB.	
POWER	

APPROVAL	I, THE UNDERSIGNED, AGREE THAT THE PRODUCT AS REPRESENTED SATISFIES DESIGN & DIMENSION REQUIREMENTS. I ALSO ACKNOWLEDGE MY DUTY TO CONFIRM PRODUCT & INSTALLATION COMPLIANCE WITH ALL APPLICABLE FEDERAL, STATE AND LOCAL REGULATIONS & STANDARDS.	
	ANY MODIFIED UNITS ARE NON-RETURNABLE	
	[] As drawn [] As marked	
	Signed: _____	Date: _____
	Printed Name: _____	
LEAD TIME WILL START UPON RECEIPT OF SIGNED APPROVAL DRAWING		

**SPECIAL UNITS ARE NON-RETURNABLE
 *AVAILABLE AT ADDITIONAL COSTS

PRODUCTION WILL START UPON
 RECEIPT OF SIGNED APPROVAL
 DRAWING

DISTRIBUTOR'S NAME: VESTIL MFG		P.O.#: _
		W.O.#: _
DRAWN BY: _	DATE: _	SALES: _
REFERENCE: _	SCALE: _	DRWG./FILE NAME:
QUOTED LEADTIME: _	QUOTE #: _	23-007-155-002