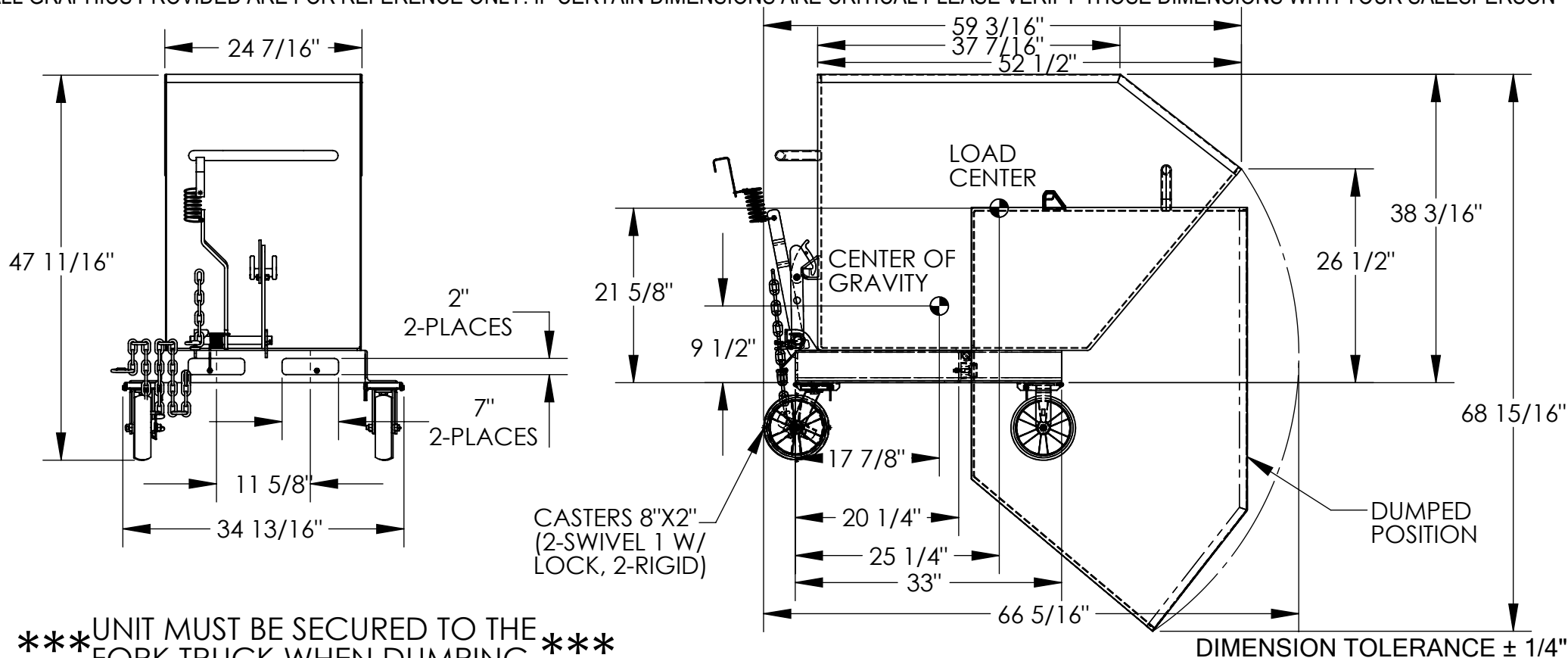


PORTABLE STEEL HOPPER - P-HOP-0.75

APPROX WEIGHT: 340.49 lbs.
DOES NOT INCLUDE WEIGHT OF POWER OR PACKAGING!!!

*** ANY ADDITIONS, DELETIONS, OR OMISSIONS MUST BE CORRECTED ON THIS DRAWING AS THIS DRAWING WILL BE CONSIDERED ALL INCLUSIVE ***

ALL GRAPHICS PROVIDED ARE FOR REFERENCE ONLY. IF CERTAIN DIMENSIONS ARE CRITICAL PLEASE VERIFY THOSE DIMENSIONS WITH YOUR SALESPERSON



*** UNIT MUST BE SECURED TO THE
FORK TRUCK WHEN DUMPING ***

STANDARD FEATURES

MODEL NUMBER: P-HOP-0.75
CAPACITY: 2,000 LBS.
VOLUME: 3/4 CU. YD.
USABLE WORK ENVELOPE: 34 13/16" X 66 5/16" X 59 3/16"
DUMP ANGLE: 90°
OVERALL WIDTH: 34 13/16"
OVERALL LENGTH: 59 3/16"
OVERALL HEIGHT: 47 11/16"
FORK POCKETS: 7" WIDE X 2" HIGH
CASTERS: 8"x2" (2-SWIVEL 1 W/ LOCK, 2-RIGID)
TOUGH BAKED IN POWDER COATED BLUE FINISH

SPECIAL FEATURES

NONE

NEVER EXCEED LOAD CENTER RATING PER FORK TRUCK
MANUFACTURER'S GUIDELINES. DO NOT USE THIS FORK TRUCK
ATTACHMENT IF LOAD WILL EXCEED FORK TRUCK
MANUFACTURER'S LOAD CENTER RATING.

APPROX. WEIGHT/ LOST LOAD=340.49 LBS.

EFFECTIVE THICKNESS= FORK LENGTH MINUS 20 1/4"

A P P R O V A L	I, THE UNDERSIGNED, AGREE THAT THE PRODUCT AS REPRESENTED SATISFIES DESIGN AND DIMENSION REQUIREMENTS. I ALSO ACKNOWLEDGE MY DUTY TO CONFIRM PRODUCT AND INSTALLATION COMPLIANCE WITH ALL APPLICABLE FEDERAL, STATE AND LOCAL REGULATIONS AND STANDARDS.	
	UNITS REQUIRING APPROVAL DRAWINGS OR MODIFIED ARE NON-RETURNABLE	
	[] As drawn [] As marked	
	Signed: _____ Date: _____	
	Printed Name: _____	
LEAD TIME WILL START UPON RECEIPT OF SIGNED APPROVAL DRAWING		

DISTRIBUTOR'S NAME:		P.O.#
VESTIL MANUFACTURING		X
DRAWN BY: JWW		W.O.#
DATE: 7/21/2021		X
REFERENCE: X	SCALE: 1:18	SALES: X
QUOTED LEAD TIME: X	QUOTE # X	FILE NAME:
		37-007-163