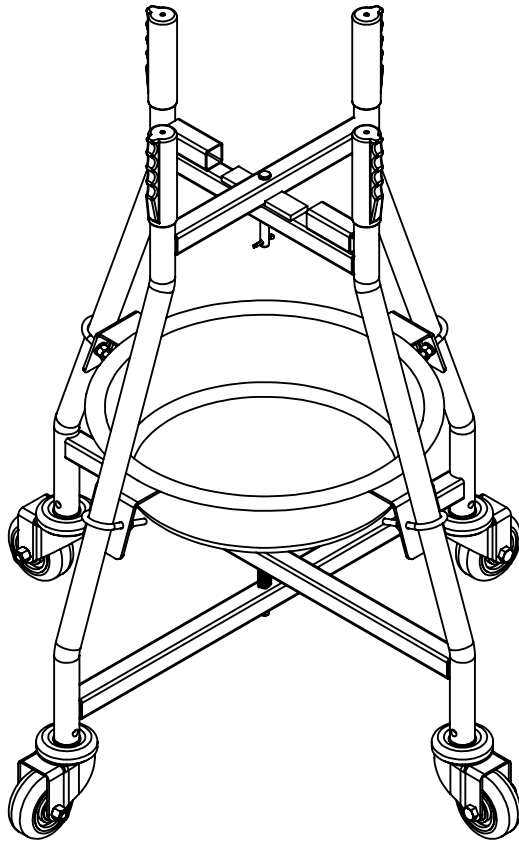


# ERGONOMIC ELEVATED BUCKET AND PAIL DOLLY ACCESSORY KIT-PDOL-DPAN

APPROX WEIGHT: 0.09 lbs.  
DOES NOT INCLUDE WEIGHT OF POWER OR PACKAGING!!!

\*\*\*ANY ADDITIONS, DELETIONS, OR OMISSIONS MUST BE CORRECTED ON THIS DRAWING AS THIS DRAWING WILL BE CONSIDERED ALL INCLUSIVE\*\*\*  
ALL GRAPHICS PROVIDED ARE FOR REFERENCE ONLY. IF CERTAIN DIMENSIONS ARE CRITICAL PLEASE VERIFY THOSE DIMENSIONS WITH YOUR SALESPERSON

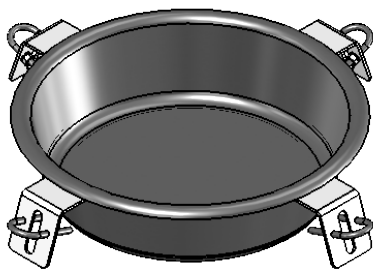
## DOLLY NOT INCLUDED



### STANDARD FEATURES

INCLUDED PARTS	
LOCK WASHER (8)	
U-NUT (4)	
HEX NUT (8)	
BRACKET (4)	
DRIP PAN (1)	

**FOR REFERENCE ONLY:  
INCLUDED PARTS INSTALLED ON DOLLY**



### INCLUDED PARTS

### SPECIAL FEATURES

NONE

**APPROVAL**

I, THE UNDERSIGNED, AGREE THAT THE PRODUCT AS REPRESENTED SATISFIES DESIGN AND DIMENSION REQUIREMENTS. I ALSO ACKNOWLEDGE MY DUTY TO CONFIRM PRODUCT AND INSTALLATION COMPLIANCE WITH ALL APPLICABLE FEDERAL, STATE AND LOCAL REGULATIONS AND STANDARDS.

**ANY MODIFIED UNITS ARE NON-RETURNABLE**

As drawn       As marked

Signed: \_\_\_\_\_ Date: \_\_\_\_\_

Printed Name: \_\_\_\_\_

**LEAD TIME WILL START UPON RECEIPT OF SIGNED APPROVAL DRAWING**

FOR INTERNAL USE ONLY PROJECT SIGN OFF		DISTRIBUTOR'S NAME:		P.O.#
		<b>VESTIL MANUFACTURING</b>		X
SALES		DRAWN BY: J. BRANDT		DATE: 4/12/2014
ENG.		REFERENCE: X		SCALE: 1:12
FAB.		QUOTED LEAD TIME: X		QUOTE #
POWER				X
				W.O.#
				X
				SALES: X
				FILE NAME:
				40-007-081