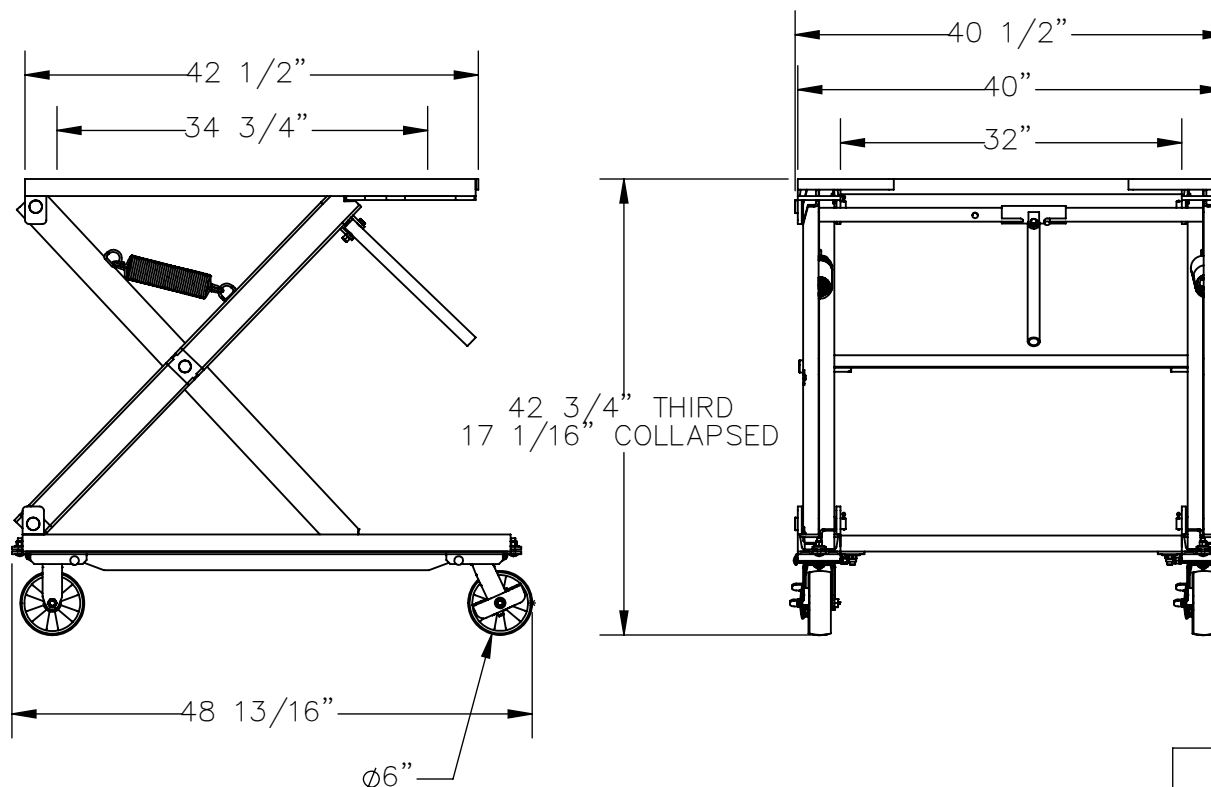


ADJUSTABLE PALLET STAND - PS-4045-CK

APPROX WEIGHT: 277.74 lbs.
DOES NOT INCLUDE WEIGHT OF POWER OR PACKAGING!!!

*** ANY ADDITIONS, DELETIONS, OR OMISSIONS MUST BE CORRECTED ON THIS DRAWING AS THIS DRAWING WILL BE CONSIDERED ALL INCLUSIVE ***

ALL GRAPHICS PROVIDED ARE FOR REFERENCE ONLY. IF CERTAIN DIMENSIONS ARE CRITICAL PLEASE VERIFY THOSE DIMENSIONS WITH YOUR SALESPERSON



STANDARD FEATURES

MODEL NUMBER IS PS-4045-CK
CAPACITY IS 1,500 POUNDS
OVERALL WIDTH IS 40 1/2"
PLATFORM WIDTH IS 40"
OVERALL LENGTH IS 48 13/16"
PLATFORM LENGTH IS 42 1/2"
THIRD SETTING IS 42 3/4"
SECOND SETTING IS 37 5/16"
FIRST SETTING IS 27 1/16"
COLLAPSED HEIGHT IS 17 1/16"
(4) Ø6" GLASS-FILLED-NYLON CASTERS - 2 SWIVEL, 2 RIGID
TOUGH BAKED IN POWDER COATED BLUE FINISH

SPECIAL FEATURES

NONE

DIMENSION TOLERANCE ± 1/4"

APPROVAL

I, THE UNDERSIGNED, AGREE THAT THE PRODUCT AS REPRESENTED SATISFIES DESIGN AND DIMENSION REQUIREMENTS. I ALSO ACKNOWLEDGE MY DUTY TO CONFIRM PRODUCT AND INSTALLATION COMPLIANCE WITH ALL APPLICABLE FEDERAL, STATE AND LOCAL REGULATIONS AND STANDARDS.

UNITS REQUIRING APPROVAL DRAWINGS OR MODIFIED ARE NON-RETURNABLE

[] As drawn [] As marked

Signed: _____ Date: _____

Printed Name: _____

LEAD TIME WILL START UPON RECEIPT OF SIGNED APPROVAL DRAWING

DISTRIBUTOR'S NAME:

VESTIL MANUFACTURING

DRAWN BY: JLH

DATE: 5/30/18

REFERENCE: X

SCALE: 1:18

QUOTED LEAD TIME: X

QUOTE # X

P.O.#

X

W.O.#

X

SALES:

X

FILE NAME:

15-007-149