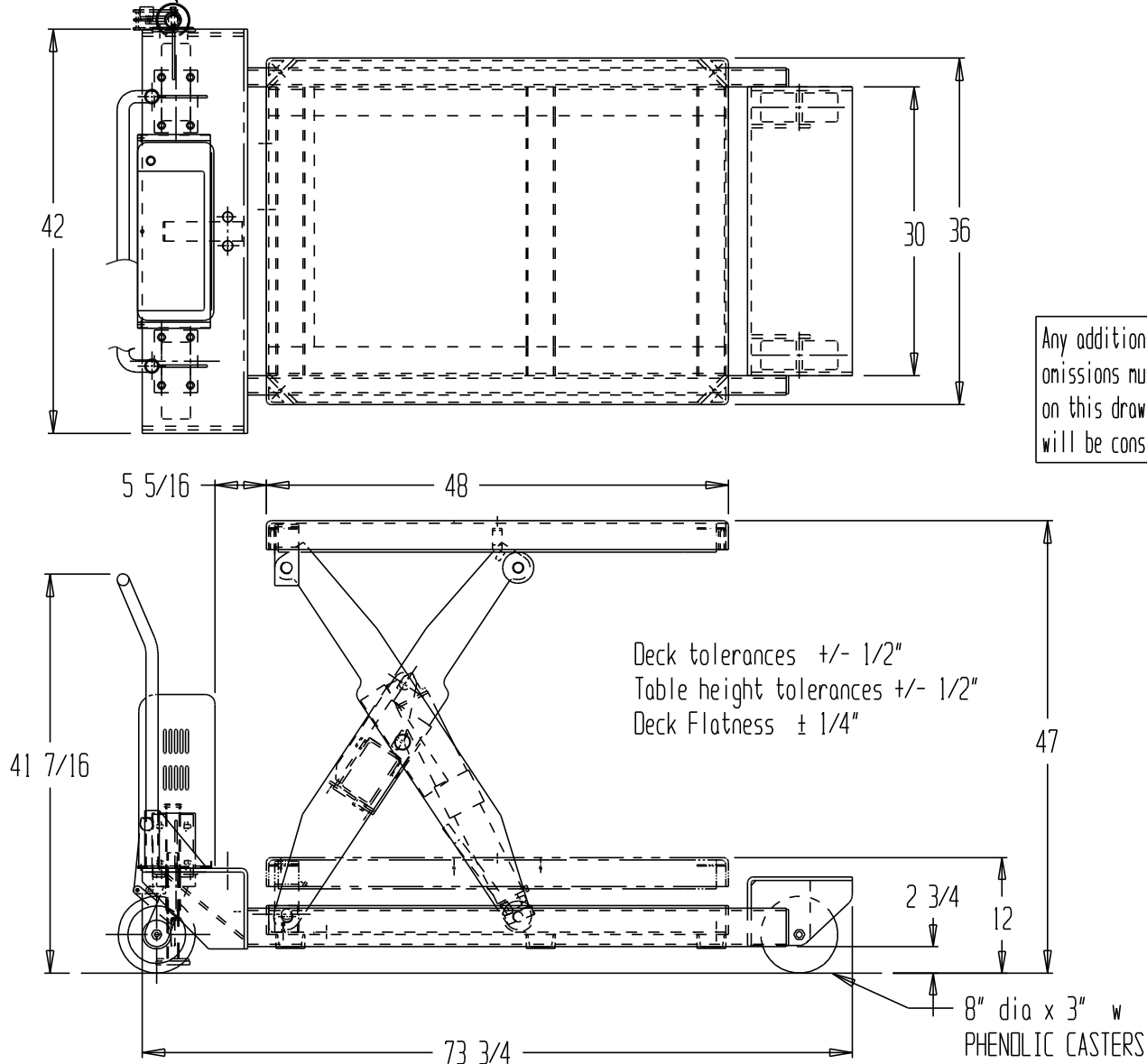


PORTABLE SCISSOR TABLE, PST-3648-4-47

FLOOR BRAKE



Any additions, deletions or omissions must be corrected on this drawing, as this drawing will be considered all inclusive.

Deck tolerances $\pm 1/2"$
Table height tolerances $\pm 1/2"$
Deck Flatness $\pm 1/4"$

8" dia x 3" w
PHENOLIC CASTERS

STANDARD FEATURES

MODEL NUMBER: PST-3648-4-47
CAPACITY: 4,000 LBS.
PLATFORM WIDTH: 36"
PLATFORM LENGTH: 48"
PLATFORM LOWERED HEIGHT: 12"
PLATFORM RAISED HEIGHT: 47"
OVERALL WIDTH: 46"
OVERALL LENGTH: 73 3/4"
GROUND CLEARANCE: 2 3/4"
CASTERS: TWO 8 x 3 w PHENOLIC SWIVEL
TWO 8 x 3 w PHENOLIC RIGID

PLEASE CIRCLE SPECIFICATIONS:

| | | | |
|--|--------------------|---------------------|--------------------|
| POWER | AC | DC (12V) | AIR OIL |
| MOTOR VOLTAGE | 115 | 200 | 230 460 |
| DEDICATED CIRCUIT REQUIRED | | | |
| MOTOR PHASE | SINGLE | THREE | |
| CONTROL | HAND | *FOOT | |
| ** ALL BATTERY CHARGERS ARE 115V AC ** | | | |
| BATTERY CHRG. | *REMOTE | ON-BOARD | |
| *CHRG. INDICATOR | YES | NO | |

*AVAILABLE AT ADDITIONAL COSTS

All graphics provided are for reference only.
If certain dimensions are critical please verify those dimensions with your salesperson

APPROVAL

I, THE UNDERSIGNED, AGREE THAT THE PRODUCT AS REPRESENTED SATISFIES DESIGN & DIMENSION REQUIREMENTS. I ALSO ACKNOWLEDGE MY DUTY TO CONFIRM PRODUCT & INSTALLATION COMPLIANCE WITH ALL APPLICABLE FEDERAL, STATE AND LOCAL REGULATIONS & STANDARDS.
ALL SPECIAL UNITS ARE NON-RETURNABLE
() As drawn () As marked
Signed: _____ Date: _____
LEAD TIME WILL START UPON RECEIPT OF SIGNED APPROVAL DRAWING

DISTRIBUTOR'S NAME:

VESTIL MFG

DRAWN BY:

DATE: _

REFERENCE: _

SCALE: 1:18

QUOTED LEADTIME: _

QUOTE #: _

P.O.#: _

W.O.#: _

SALES: _

DRWG./FILE NAME:

PST-3648-4-47

SPECIAL FEATURES

NONE