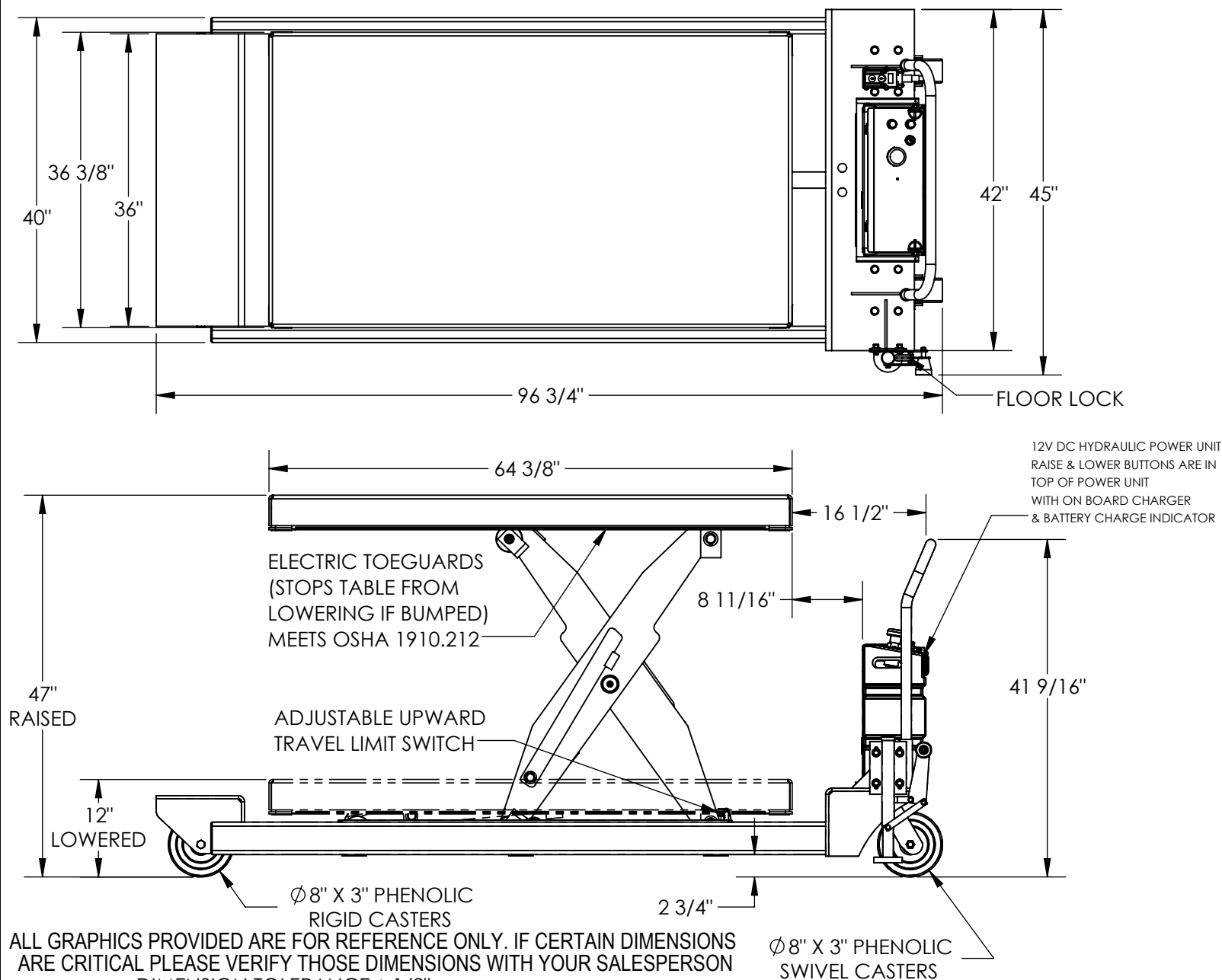


# PORTABLE SCISSOR TABLE - PST-3664-5-47

APPROX WEIGHT: 1579.72 lbs.  
DOES NOT INCLUDE WEIGHT OF POWER OR PACKAGING!!!

\*\*\*ANY ADDITIONS, DELETIONS, OR OMISSIONS MUST BE CORRECTED ON THIS DRAWING AS THIS DRAWING WILL BE CONSIDERED ALL INCLUSIVE\*\*\*



ALL GRAPHICS PROVIDED ARE FOR REFERENCE ONLY. IF CERTAIN DIMENSIONS ARE CRITICAL PLEASE VERIFY THOSE DIMENSIONS WITH YOUR SALESPERSON

DIMENSION TOLERANCE  $\pm 1/2"$   
TABLE HEIGHT TOLERANCE  $\pm 1/2"$   
DECK FLATNESS  $\pm 1/4"$

## STANDARD FEATURES

MODEL NUMBER: PST-3664-5-47  
CAPACITY: 5,000 LBS  
PLATFORM WIDTH: 36 3/8"  
PLATFORM LENGTH: 64 3/8"  
PLATFORM LOWERED HEIGHT: 12"  
PLATFORM RAISED HEIGHT: 47"  
OVERALL WIDTH: 45"  
OVERALL LENGTH: 96 3/4"  
GROUND CLEARANCE: 2 3/4"  
CASTERS: TWO Ø8" X 3" PHENOLIC SWIVEL  
TWO Ø8" X 3" PHENOLIC RIGID  
12V DC POWER UNIT W/ ON-BOARD CHARGER  
& BATTERY CHARGE INDICATOR  
DURABLE LIQUID PAINT BLUE FINISH

## SPECIAL FEATURES

NONE

APPROVAL

I, THE UNDERSIGNED, AGREE THAT THE PRODUCT AS REPRESENTED SATISFIES DESIGN AND DIMENSION REQUIREMENTS. I ALSO ACKNOWLEDGE MY DUTY TO CONFIRM PRODUCT AND INSTALLATION COMPLIANCE WITH ALL APPLICABLE FEDERAL, STATE AND LOCAL REGULATIONS AND STANDARDS.

**UNITS REQUIRING APPROVAL DRAWINGS OR MODIFIED ARE NON-RETURNABLE**

[ ] As drawn [ ] As marked

Signed: \_\_\_\_\_ Date: \_\_\_\_\_

Printed Name: \_\_\_\_\_

LEAD TIME WILL START UPON RECEIPT OF SIGNED APPROVAL DRAWING

DISTRIBUTOR'S NAME:

VESTIL MANUFACTURING

DRAWN BY: KGH

DATE: 5/10/2018

REFERENCE: X

SCALE: 1:18

QUOTED LEAD TIME: X

QUOTE # X

P.O.# X

W.O.# X

SALES: X

FILE NAME:

01-007-387-001