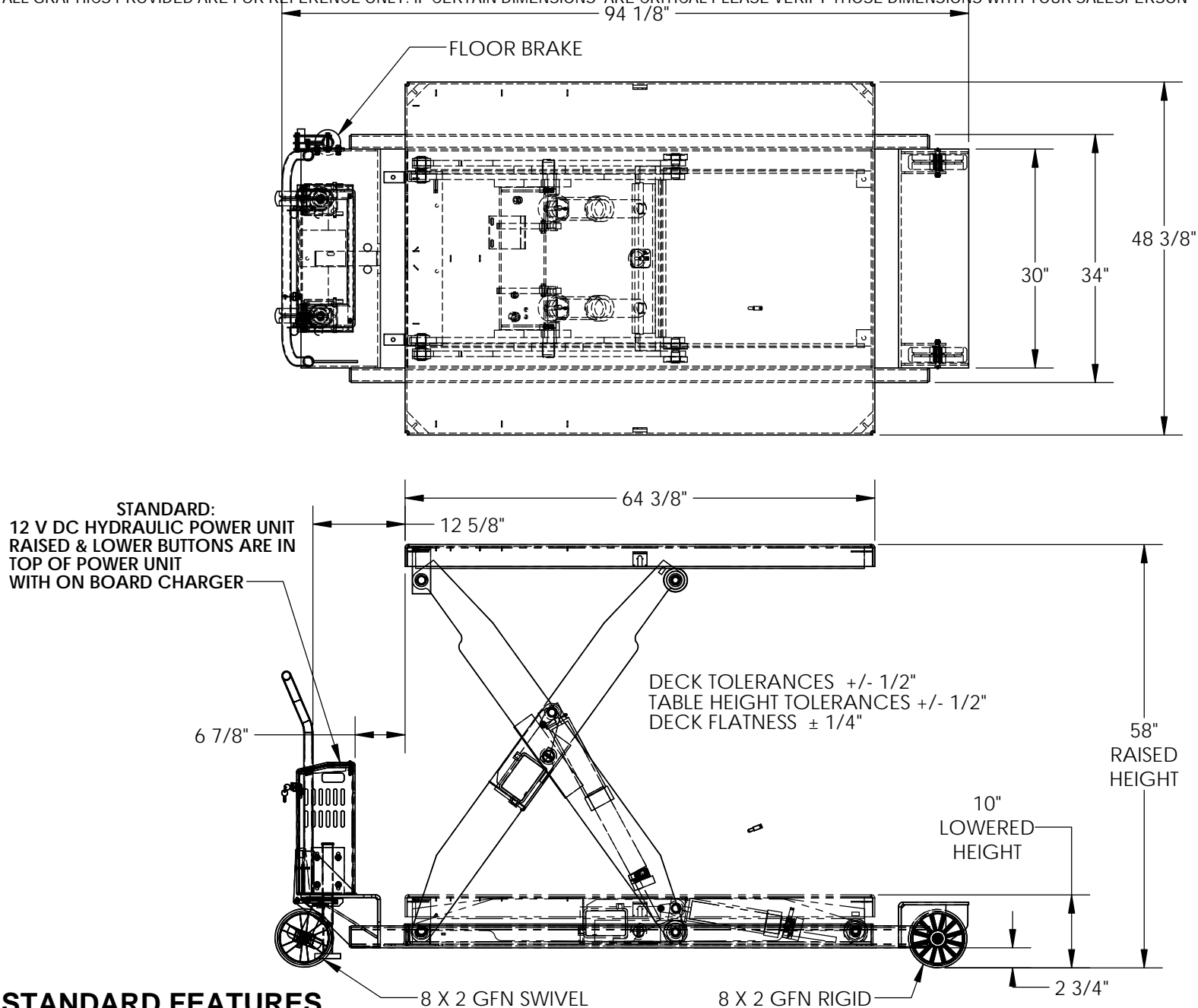


PORTABLE SCISSOR TABLE - PST-4864-3-58

APPROX WEIGHT: 1170.00 lbs.
DOES NOT INCLUDE WEIGHT OF POWER OR PACKAGING!!!

ANY ADDITIONS, DELETIONS, OR OMISSIONS MUST BE CORRECTED ON THIS DRAWING AS THIS DRAWING WILL BE CONSIDERED ALL INCLUSIVE
ALL GRAPHICS PROVIDED ARE FOR REFERENCE ONLY. IF CERTAIN DIMENSIONS ARE CRITICAL PLEASE VERIFY THOSE DIMENSIONS WITH YOUR SALESPERSON



STANDARD FEATURES

MODEL NUMBER IS PST-4864-3-58
CAPACITY: 2,000 LBS.
PLATFORM WIDTH: 48 3/8"
PLATFORM LENGTH: 64 3/8"
PLATFORM LOWERED HEIGHT: 10"
PLATFORM RAISED HEIGHT: 58"
OVERALL WIDTH: 48 3/8"
OVERALL LENGTH: 94 1/8"
GROUND CLEARANCE: 2 3/4"
CASTERS: TWO 8 X 2 GFN SWIVEL
TWO 8 X 2 GFN RIGID

STANDARD

ELECTRICAL SPECIFICATIONS

12 VOLT DC WITH ON-BOARD CHARGER

SPECIAL FEATURES

NONE

APPROVAL

I, THE UNDERSIGNED, AGREE THAT THE PRODUCT AS REPRESENTED SATISFIES DESIGN AND DIMENSION REQUIREMENTS. I ALSO ACKNOWLEDGE MY DUTY TO CONFIRM PRODUCT AND INSTALLATION COMPLIANCE WITH ALL APPLICABLE FEDERAL, STATE AND LOCAL REGULATIONS AND STANDARDS.
ALL SPECIAL UNITS ARE NON-RETURNABLE
[] As drawn [] As marked

Signed: _____ Date: _____

LEAD TIME WILL START UPON RECEIPT
OF SIGNED APPROVAL DRAWING

DISTRIBUTOR'S NAME:

VESTIL MANUFACTURING

DRAWN BY: DLS

DATE: 9/30/2014

REFERENCE: X

SCALE: 1:20

QUOTED LEAD TIME: X

QUOTE # X

P.O.# X

W.O.# X

SALES: X

FILE NAME:

01-007-097