

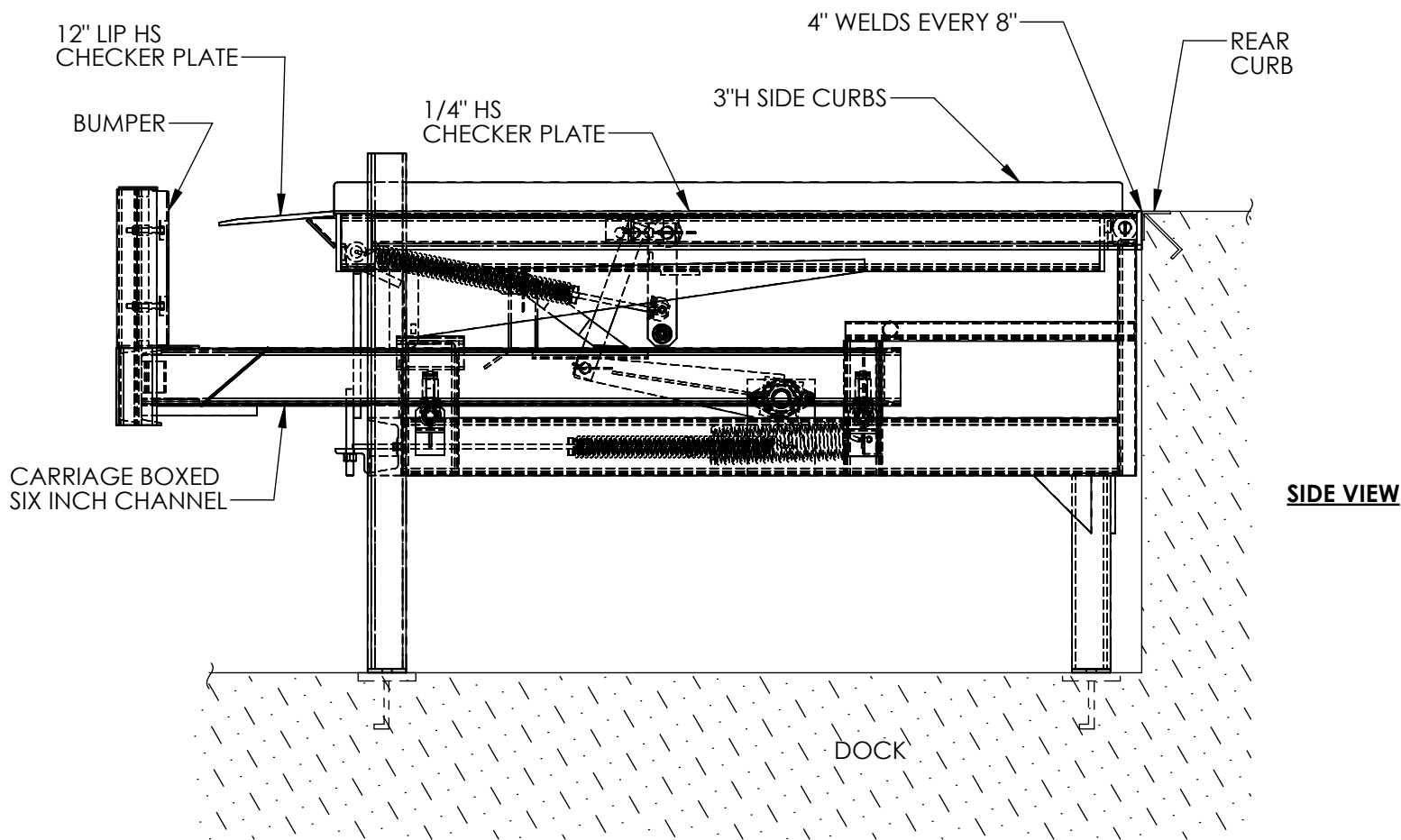
TRUCK ACTUATED DOCKLEVELER - PU-1000-SCB

APPROX WEIGHT: 3203 lbs.

DOES NOT INCLUDE WEIGHT OF POWER OR PACKAGING!!!

ANY ADDITIONS, DELETIONS, OR OMISSIONS MUST BE CORRECTED ON THIS DRAWING AS THIS DRAWING WILL BE CONSIDERED ALL INCLUSIVE

DOCKLEVELER UNIT WITH LEGS FOR IN-FRONT-OF-DOCK PLACEMENT



PLEASE SPECIFY DOCK HEIGHT

DOCK HEIGHT = _____"

ALL GRAPHICS PROVIDED ARE FOR REFERENCE ONLY. IF CERTAIN DIMENSIONS ARE CRITICAL PLEASE VERIFY THOSE DIMENSIONS WITH YOUR SALESPERSON

STANDARD FEATURES

MODEL NUMBER: PU-1000-SCB

DECK WIDTH: 72"

USABLE DECK WIDTH: 70 7/8"

DECK LENGTH: 120"

CAPACITY (GROSS ROLLING LOAD): 20,000 LBS.

VERTICAL SERVICE RANGE: 12" ABOVE/ 8" BELOW

ALL DESIGNING, ENGINEERING, AND FABRICATION COMPLIES WITH OSHA & ANSI MH30.1

WARNING: CHECK APPLICABLE STATE AND LOCAL CODES FOR YOUR AREA!!

**SINGLE AXLE CAPACITY NOT TO EXCEED 70% OF LOAD CAPACITY

SPECIAL FEATURES

NONE

FOR INTERNAL USE ONLY
PROJECT SIGN OFF

| | |
|-------|--|
| SALES | |
| ENG. | |
| FAB. | |
| POWER | |

APPROVAL

I, THE UNDERSIGNED, AGREE THAT THE PRODUCT AS REPRESENTED SATISFIES DESIGN AND DIMENSION REQUIREMENTS. I ALSO ACKNOWLEDGE MY DUTY TO CONFIRM PRODUCT AND INSTALLATION COMPLIANCE WITH ALL APPLICABLE FEDERAL, STATE AND LOCAL REGULATIONS AND STANDARDS.

ANY MODIFIED UNITS ARE NON-RETURNABLE

[] As drawn [] As marked

Signed: _____ Date: _____

Printed Name: _____

LEAD TIME WILL START UPON RECEIPT OF SIGNED APPROVAL DRAWING

DISTRIBUTOR'S NAME:

VESTIL MANUFACTURING

DRAWN BY: TJM

DATE: 09/15/10

REFERENCE: X

SCALE: 1:18

QUOTED LEAD TIME: X

QUOTE # X

P.O.# X

W.O.# X

SALES: X

FILE NAME:

07-007-030