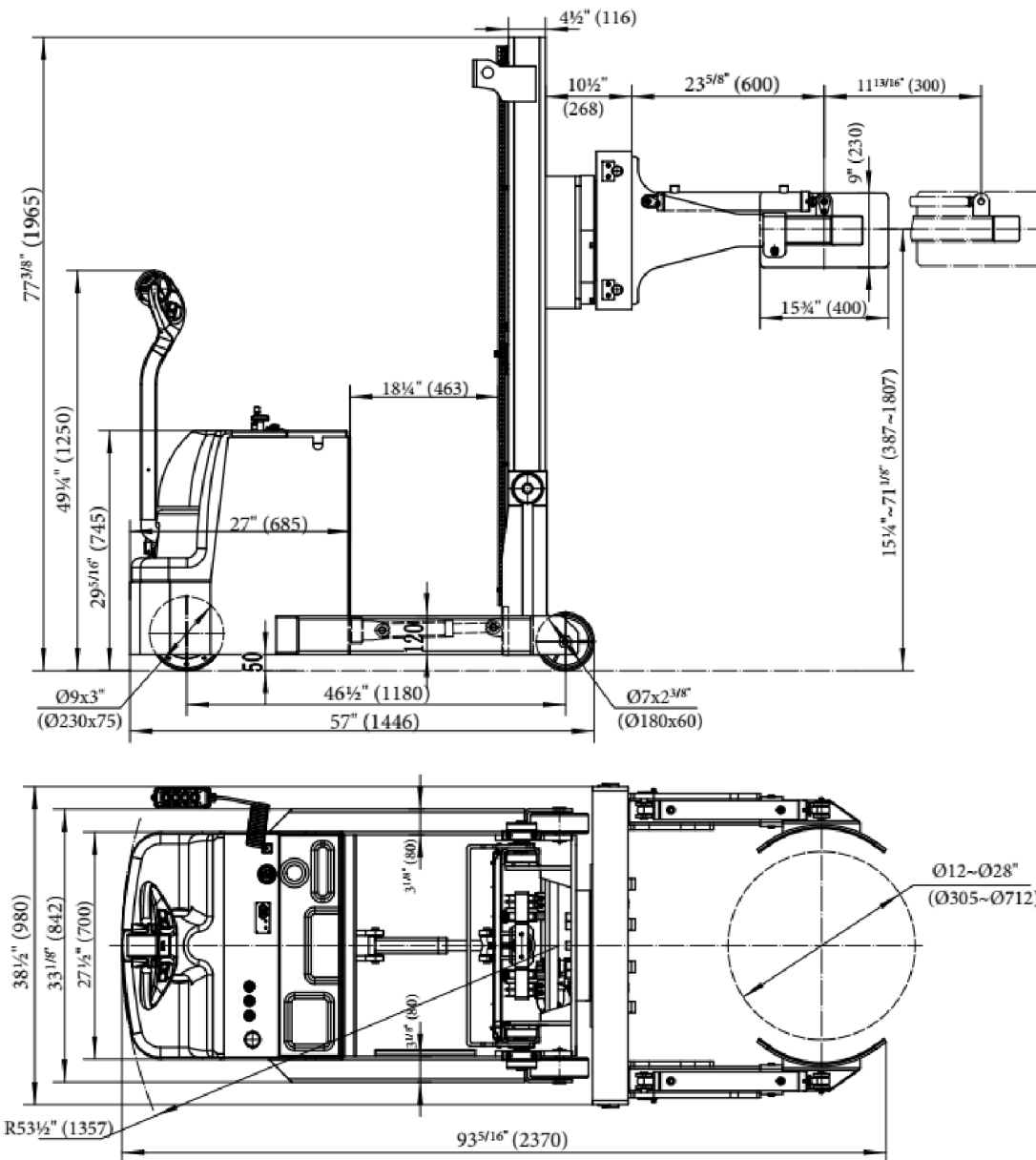


VERTICAL DRUM GRIPPER/ROTATOR W/ REACH- S-MU-VDGR-64-REACH

APPROX WEIGHT: 1691 lbs.

DOES NOT INCLUDE WEIGHT OF POWER OR PACKAGING!!!

ANY ADDITIONS, DELETIONS, OR OMISSIONS MUST BE CORRECTED ON THIS DRAWING AS THIS DRAWING WILL BE CONSIDERED ALL INCLUSIVE



ALL GRAPHICS PROVIDED ARE FOR REFERENCE ONLY. IF CERTAIN DIMENSIONS ARE CRITICAL PLEASE VERIFY THOSE DIMENSIONS WITH YOUR SALESPERSON

STANDARD FEATURES

MODEL NUMBER: S-MU-VDGR-64-REACH
DRUM DISPENSE HEIGHT: 64"
DRUM TYPE: 16, 20, 30 & 55 GALLON STEEL
CAPACITY : 800 LBS
VERTICAL DRUM LIFT HEIGHT: 55"
DRUM ROTATION: 180°
DRIVE MOTOR: 24V/0.7KW
LIFT MOTOR: 24V/2.0KW
BATTERY: 2X12V/70 - 85AH BATTERY
CHARGER: 24V/12AMP LIFT SPEED W/O
LOAD: 5.9"/SEC
LIFT SPEED W/LOAD: 2.95"/SEC
LOWER DOWN SPEED W/O LOAD: 4"/SEC
LOWER DOWN SPEED W/LOAD: 3.15"/SEC
TRAVEL SPEED W/O LOAD: 3.43 m/H
TRAVEL SPEED W/LOAD: 2.8 m/H

APPROVAL

I, THE UNDERSIGNED, AGREE THAT THE PRODUCT AS REPRESENTED SATISFIES DESIGN AND DIMENSION REQUIREMENTS. I ALSO ACKNOWLEDGE MY DUTY TO CONFIRM PRODUCT AND INSTALLATION COMPLIANCE WITH ALL APPLICABLE FEDERAL, STATE AND LOCAL REGULATIONS AND STANDARDS.
UNITS REQUIRING APPROVAL DRAWINGS OR MODIFIED ARE NON-RETURNABLE

[] As drawn [] As marked

Signed: _____ Date: _____

Printed Name: _____

LEAD TIME WILL START UPON RECEIPT OF SIGNED APPROVAL DRAWING

DISTRIBUTOR'S NAME:

VESTIL MANUFACTURING

P.O.# X

W.O.# X

DRAWN BY: MJM

DATE: 1/5/2026

SALES: X

REFERENCE: X

SCALE: 1:4

FILE NAME:

QUOTED LEAD TIME: X

QUOTE # X

S-MU-VDGR-64-REACH