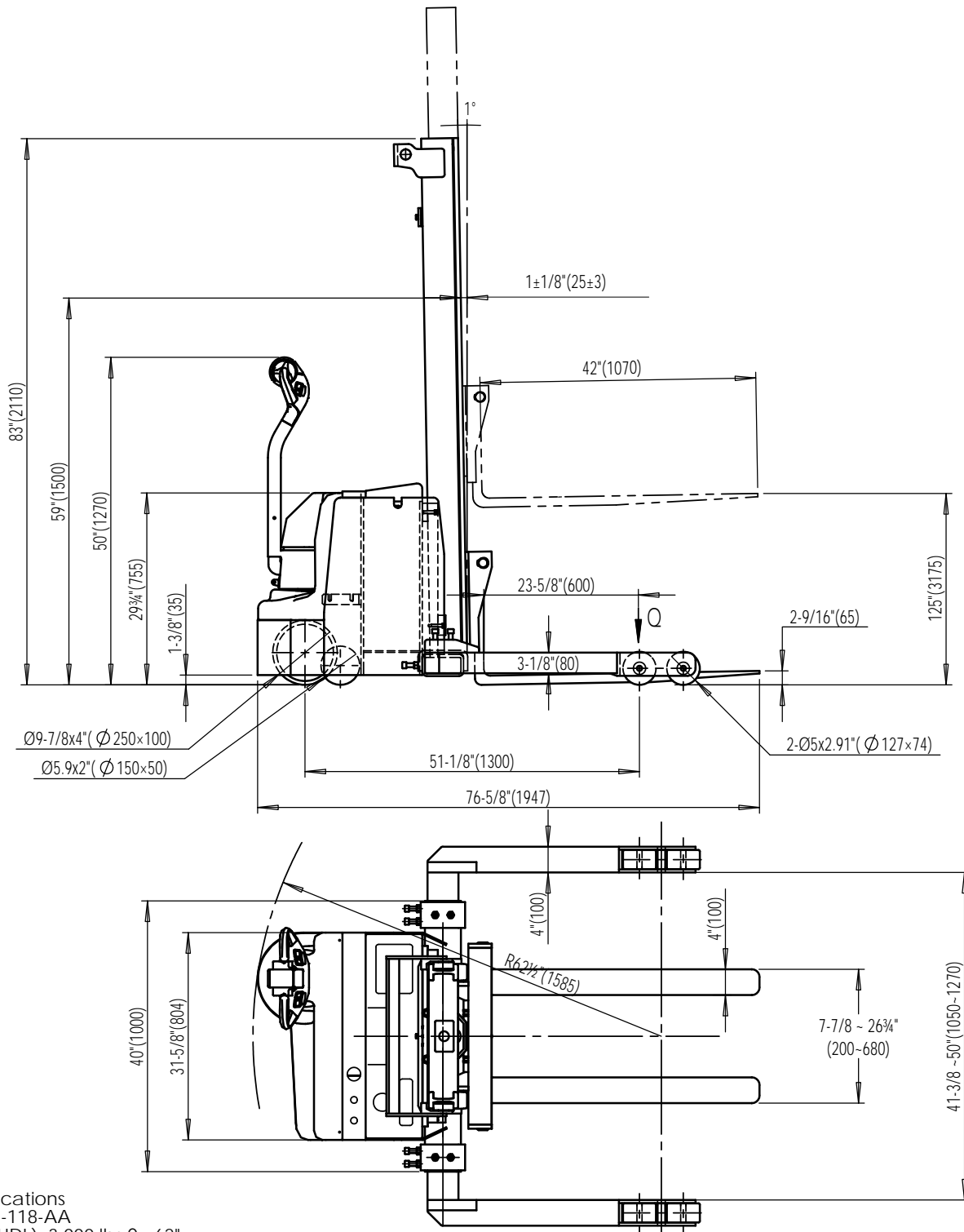


S3-125-AA (3,000 lbs Fully Powered Stacker with Adjustable Forks & Adjustable Legs)



Specifications

Model # S3-118-AA
 Capacity (UDL): 3,000 lbs 0 - 62"
 Capacity (UDL): 2,500 lbs 62 - 118"
 Capacity (UDL): 2,000 lbs 118 - 125"
 Lift height: 125"
 Lowered height: 2-9/16"
 Adjustable Forks & adjustable legs
 Overall mast height (Retracted): 83"
 Overall mast height (Extended): 144 11/16"
 Drive wheel: Ø9-7/8x4"
 Front wheel: 2 - Ø5x2.9"
 Stabilizer wheel: Ø5.9x2.0"
 Drive Motor: DC24V/1.2Kw
 Lift Motor: DC24V/3.0Kw
 Battery: 2x12V/80-95Ah
 Battery Charger: 24V/8amp
 Travel Speed w/load: 2.8m/h
 Travel Speed w/o load: 3.4m/h

VESTIL MANUFACTURING CORP.

Model: S3 - 125 - AA

Description: 3,000 lbs Fully Powered Stacker with Adjustable Forks & Adjustable Legs

Design: T.M

Date: 08/11/15