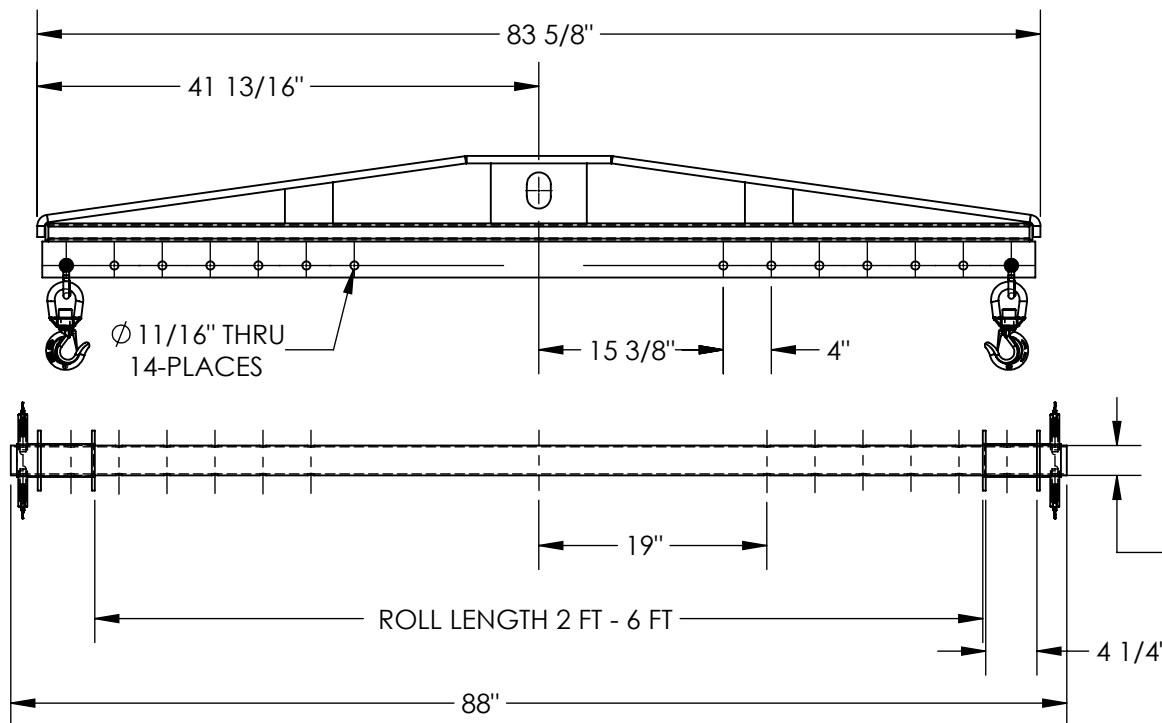


# SPREADER BEAM ROLL LIFTER - SBRL-25

APPROX WEIGHT: 87.83 lbs.  
DOES NOT INCLUDE WEIGHT OF POWER OR PACKAGING!!!

\*\*\* ANY ADDITIONS, DELETIONS, OR OMISSIONS MUST BE CORRECTED ON THIS DRAWING AS THIS DRAWING WILL BE CONSIDERED ALL INCLUSIVE \*\*\*

ALL GRAPHICS PROVIDED ARE FOR REFERENCE ONLY. IF CERTAIN DIMENSIONS ARE CRITICAL PLEASE VERIFY THOSE DIMENSIONS WITH YOUR SALESPERSON

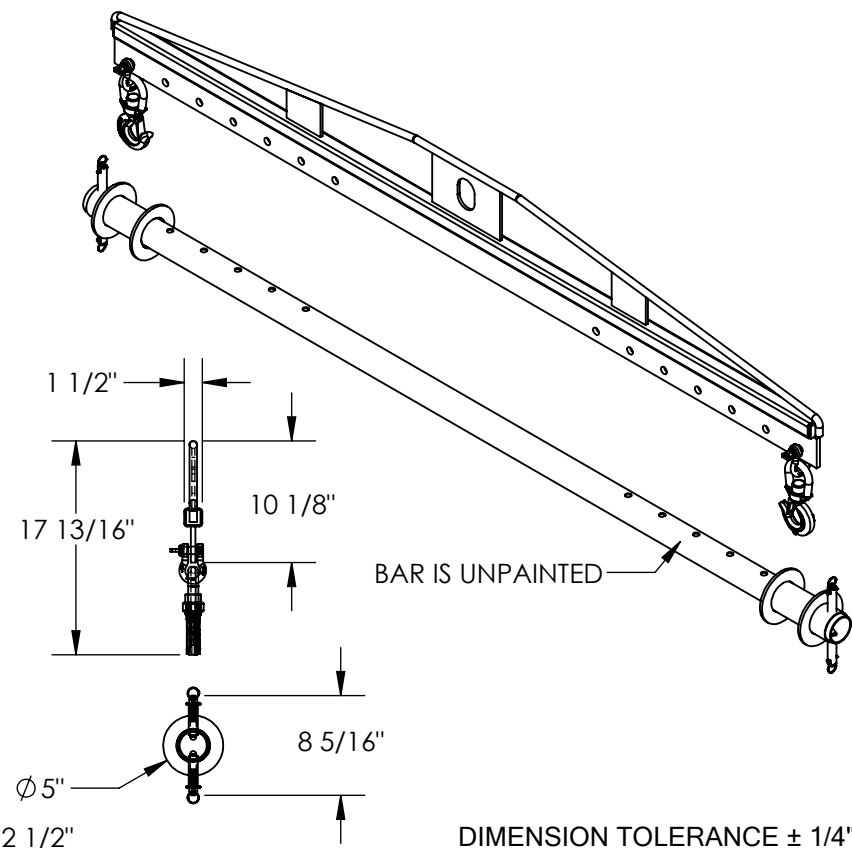


## STANDARD FEATURES

MODEL NUMBER IS SBRL-25  
OVERALL LENGTH IS 88"  
OVERALL WIDTH IS  $\phi 5"$   
OVERALL HEIGHT IS 17 13/16"  
UNIFORM CAPACITY IS 2,500 LBS  
MAX. ROLL LENGTH IS 6'  
CORE ROD IS  $\phi 2 \frac{1}{2}"$   
WIDTH IS ADJUSTABLE ON 4" INCREMENTS.  
INCLUDES TWO OF SLING SL-2-F-4 (NOT SHOWN)  
TOUGH BAKED IN POWDER COATED BLUE FINISH  
STIFFENER BAR IS UNPAINTED

## SPECIAL FEATURES

NONE



DIMENSION TOLERANCE  $\pm 1/4"$

APPROVAL

I, THE UNDERSIGNED, AGREE THAT THE PRODUCT AS REPRESENTED SATISFIES DESIGN AND DIMENSION REQUIREMENTS. I ALSO ACKNOWLEDGE MY DUTY TO CONFIRM PRODUCT AND INSTALLATION COMPLIANCE WITH ALL APPLICABLE FEDERAL, STATE AND LOCAL REGULATIONS AND STANDARDS.  
**UNITS REQUIRING APPROVAL DRAWINGS OR MODIFIED ARE NON-RETURNABLE**

[ ] As drawn [ ] As marked

Signed: \_\_\_\_\_ Date: \_\_\_\_\_

Printed Name: \_\_\_\_\_

LEAD TIME WILL START UPON RECEIPT OF SIGNED APPROVAL DRAWING

DISTRIBUTOR'S NAME:		P.O.#
VESTIL MANUFACTURING		X
W.O.#		X
DRAWN BY:	DATE:	SALES:
RPS	9/26/2012	X
REFERENCE:	SCALE:	FILE NAME:
X	1:16	
QUOTED LEAD TIME:	QUOTE #	
X	X	08-007-249