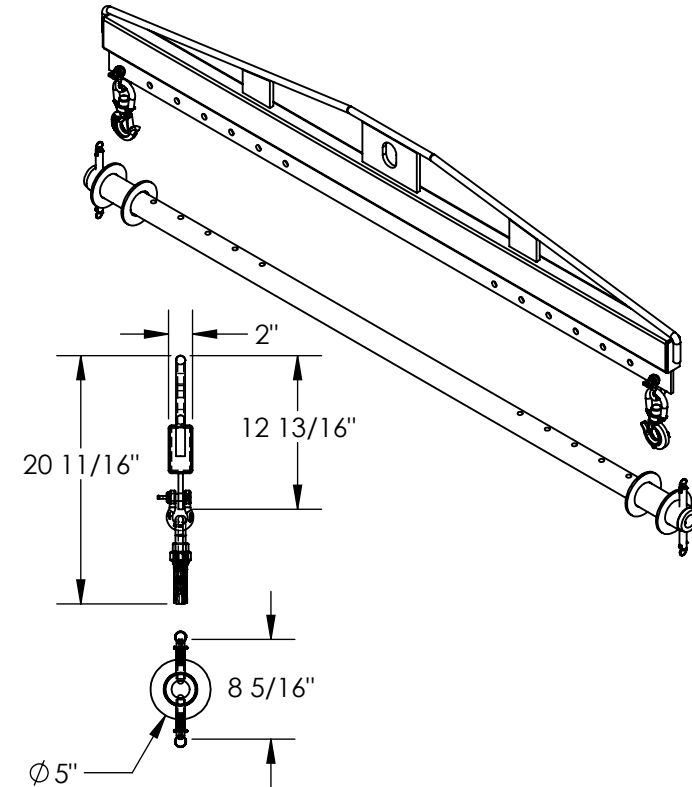
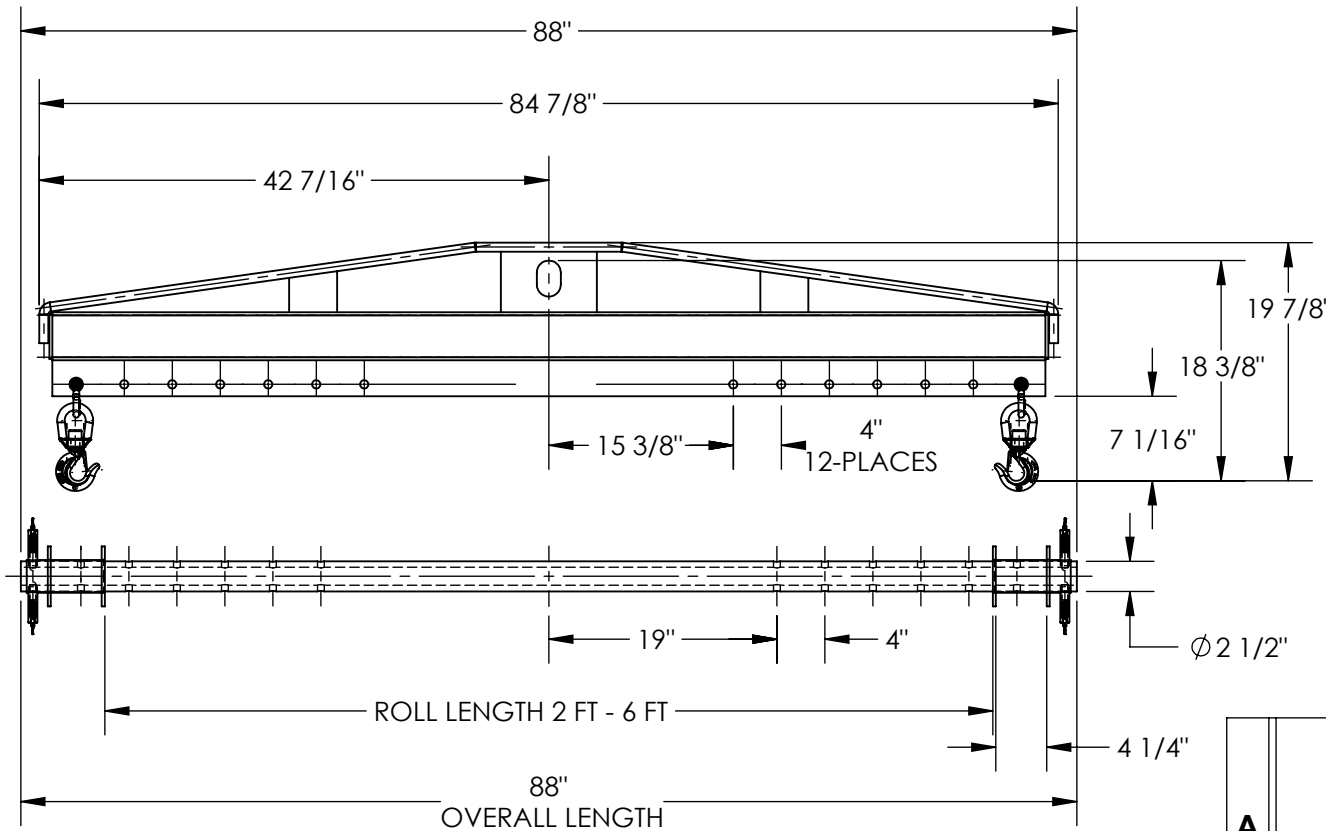


SPREADER BEAM ROLL LIFTER - SBRL-40

APPROX WEIGHT: 200.06 lbs.
DOES NOT INCLUDE WEIGHT OF POWER OR PACKAGING!!!

*** ANY ADDITIONS, DELETIONS, OR OMISSIONS MUST BE CORRECTED ON THIS DRAWING AS THIS DRAWING WILL BE CONSIDERED ALL INCLUSIVE ***

ALL GRAPHICS PROVIDED ARE FOR REFERENCE ONLY. IF CERTAIN DIMENSIONS ARE CRITICAL PLEASE VERIFY THOSE DIMENSIONS WITH YOUR SALESPERSON



DIMENSION TOLERANCE ± 1/4"

I, THE UNDERSIGNED, AGREE THAT THE PRODUCT AS REPRESENTED SATISFIES DESIGN AND DIMENSION REQUIREMENTS. I ALSO ACKNOWLEDGE MY DUTY TO CONFIRM PRODUCT AND INSTALLATION COMPLIANCE WITH ALL APPLICABLE FEDERAL, STATE AND LOCAL REGULATIONS AND STANDARDS.

UNITS REQUIRING APPROVAL DRAWINGS OR MODIFIED ARE NON-RETURNABLE

[] As drawn [] As marked

Signed: _____ Date: _____

Printed Name: _____

LEAD TIME WILL START UPON RECEIPT OF SIGNED APPROVAL DRAWING

APPROVAL

DISTRIBUTOR'S NAME:		P.O.#
VESTIL MANUFACTURING		X
DRAWN BY: RPS		DATE: 09/26/2012
REFERENCE: X		SCALE: 1:16
QUOTED LEAD TIME: X		QUOTE # X
		SALES: X
		FILE NAME: 08-007-250

SPECIAL FEATURES

NONE

STANDARD FEATURES

- MODEL NUMBER IS SBRL-40
- OVERALL LENGTH IS 88"
- OVERALL WIDTH IS 5"
- OVERALL HEIGHT IS 20 11/16"
- UNIFORM CAPACITY IS 4,000 LBS
- MAX. ROLL LENGTH IS 6'
- TOUGH BAKED IN POWDER COATED BLUE FINISH
- STIFFENER BAR IS UNPAINTED
- CORE ROD IS 2 1/2"
- WIDTH IS ADJUSTABLE ON 4" INCREMENTS
- INCLUDES TWO OF SLING SL-2-F-4 (NOT SHOWN)