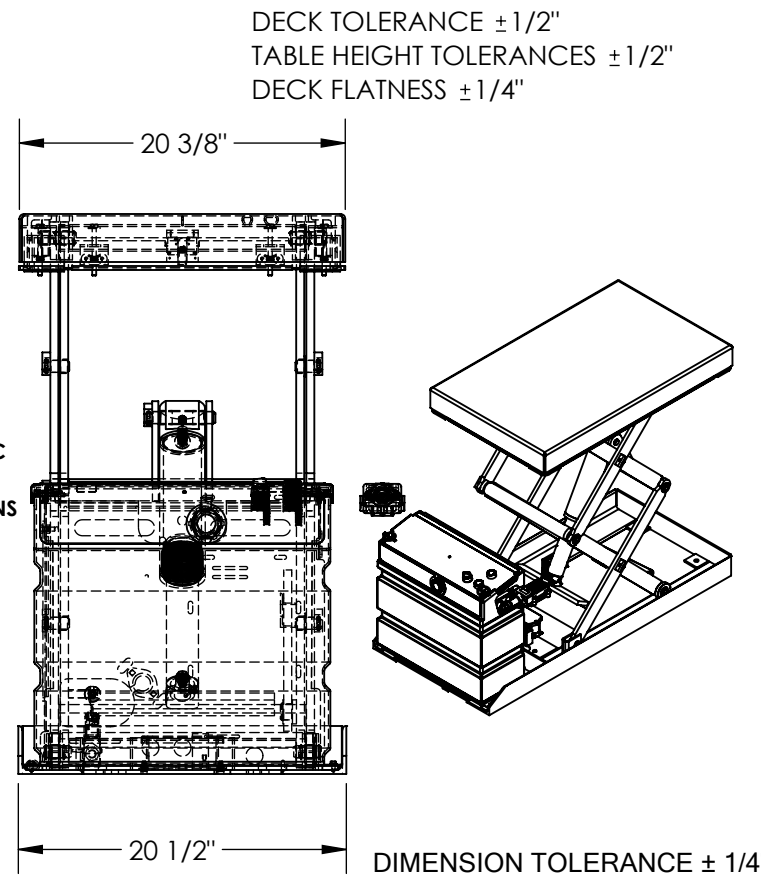
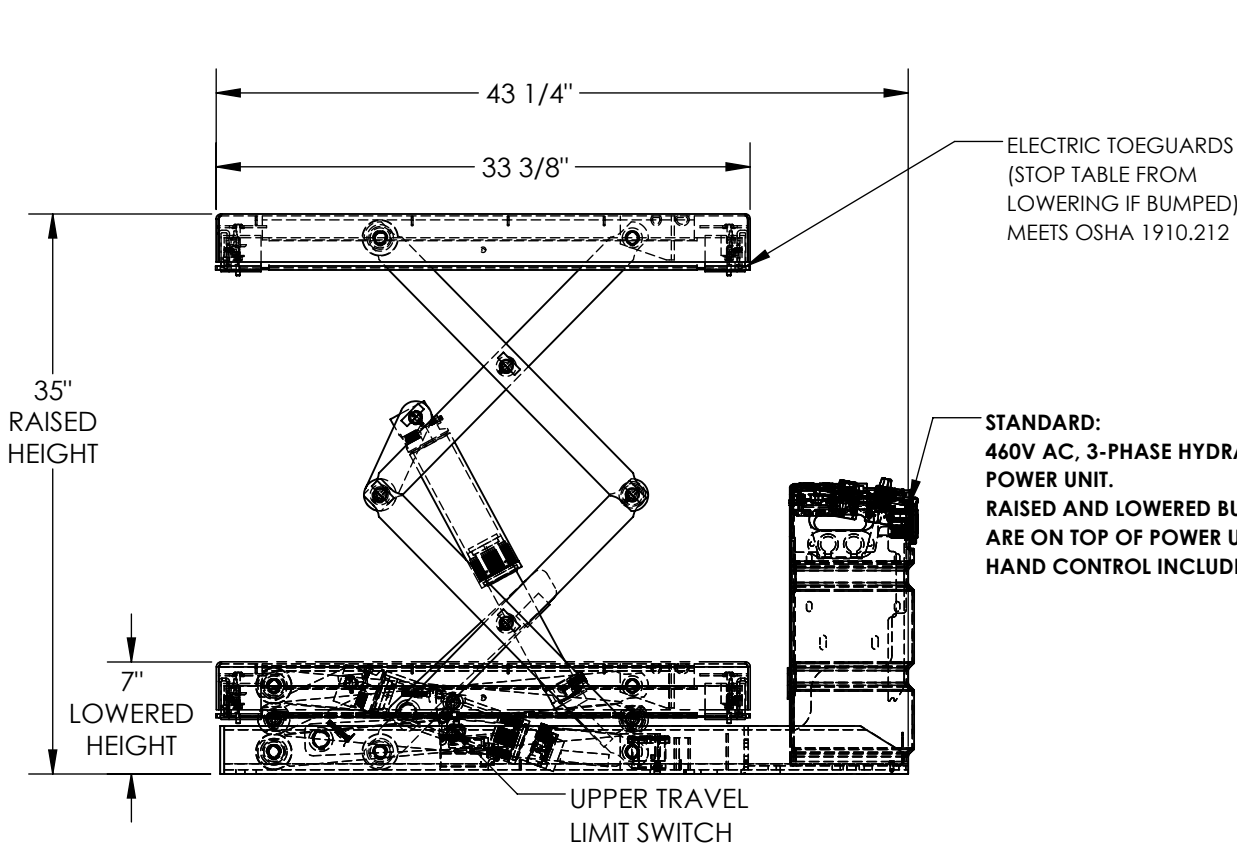


APPROX WEIGHT: 268.24 lbs.
DOES NOT INCLUDE WEIGHT OF POWER OR PACKAGING!!!

AC POWERED HYDRAULIC SCISSOR LIFT TABLE- SCTABD-1000-2033-AC

*** ANY ADDITIONS, DELETIONS, OR OMISSIONS MUST BE CORRECTED ON THIS DRAWING AS THIS DRAWING WILL BE CONSIDERED ALL INCLUSIVE ***
ALL GRAPHICS PROVIDED ARE FOR REFERENCE ONLY. IF CERTAIN DIMENSIONS ARE CRITICAL PLEASE VERIFY THOSE DIMENSIONS WITH YOUR SALESPERSON



STANDARD FEATURES

MODEL NUMBER IS SCTABD-1000-2033-AC
DECK WIDTH IS 20 3/8"
DECK LENGTH IS 33 3/8"
RAISED HEIGHT IS 35"
LOWERED HEIGHT IS 7"
TABLE CAPACITY (EVENLY DISTRIBUTED)
MAX CAPACITY IS 1,000 LBS
CONTROL IS HANDHELD 2 BUTTON, NEMA 4 PENDANT
WITH MINIMUM 8' USABLE COIL CORD
SAFETY MAINTENANCE PROPS, DISPLACEMENT
STYLE CYLINDERS INSTALLED ROD DOWN
EMERGENCY SAFETY STOP HYDRAULIC FUSES
UPPER TRAVEL LIMIT SWITCH
ELECTRIC PINCH POINT GUARD
DURABLE LIQUID PAINT BLUE FINISH

SPECIAL FEATURES

NONE

PLEASE CIRCLE SPECIFICATIONS:

POWER	AC	DC (12V)	AIR/OIL
MOTOR VOLTAGE	115	208	230 460
DEDICATED CIRCUIT REQUIRED 60Hz			
MOTOR PHASE	SINGLE	THREE	
CONTROL	HAND	FOOT	

APPROVAL

I, THE UNDERSIGNED, AGREE THAT THE PRODUCT AS REPRESENTED SATISFIES DESIGN AND DIMENSION REQUIREMENTS. I ALSO ACKNOWLEDGE MY DUTY TO CONFIRM PRODUCT AND INSTALLATION COMPLIANCE WITH ALL APPLICABLE FEDERAL, STATE AND LOCAL REGULATIONS AND STANDARDS.

UNITS REQUIRING APPROVAL DRAWINGS OR MODIFIED ARE NON-RETURNABLE

[] As drawn [] As marked

Signed: _____ Date: _____

Printed Name: _____

LEAD TIME WILL START UPON RECEIPT OF SIGNED APPROVAL DRAWING

DISTRIBUTOR'S NAME:		P.O.#
VESTIL MANUFACTURING		X
W.O.#	SALES:	FILE NAME:
X	X	
DRAWN BY: CRA	DATE: 06/03/2019	
REFERENCE: X	SCALE: 1:12	
QUOTED LEAD TIME: X	QUOTE # X	01-007-401