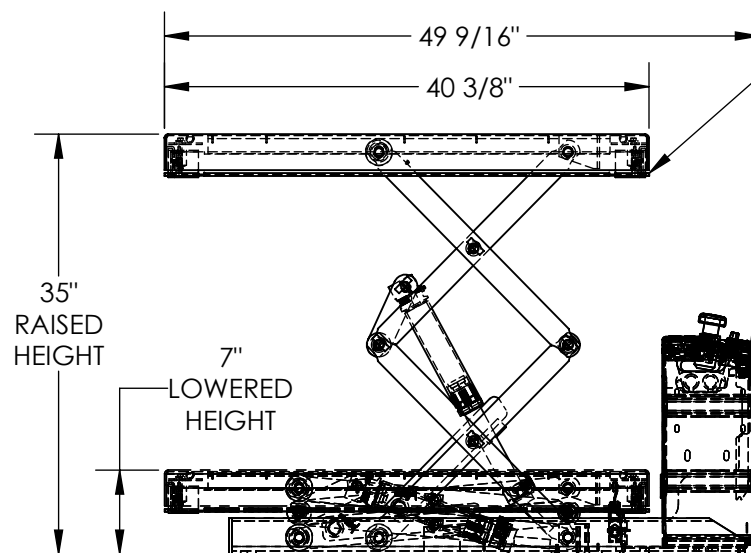


DC POWERED HYDRAULIC SCISSOR LIFT TABLE - SCTABD-750-2040-DC

APPROX WEIGHT: 273.39 lbs.
DOES NOT INCLUDE WEIGHT OF POWER OR PACKAGING!!!

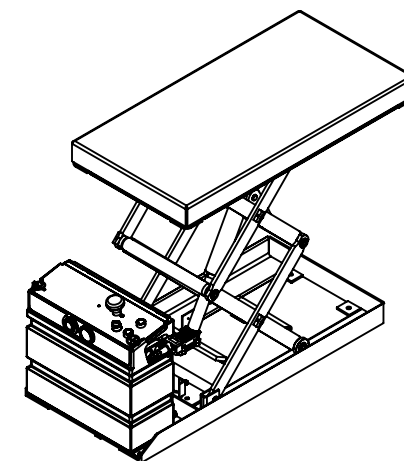
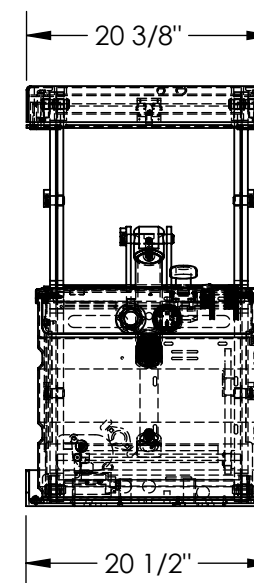
*** ANY ADDITIONS, DELETIONS, OR OMISSIONS MUST BE CORRECTED ON THIS DRAWING AS THIS DRAWING WILL BE CONSIDERED ALL INCLUSIVE ***

ALL GRAPHICS PROVIDED ARE FOR REFERENCE ONLY. IF CERTAIN DIMENSIONS ARE CRITICAL PLEASE VERIFY THOSE DIMENSIONS WITH YOUR SALESPERSON



ELECTRIC TOEGUARDS
(STOP TABLE FROM
LOWERING IF BUMPED)
MEETS OSHA 1910.212

STANDARD:
12V DC HYDRAULIC POWER UNIT
RAISED AND LOWERED BUTTONS
ARE ON TOP OF POWER UNIT
WITH ON BOARD CHARGER
AND HAND CONTROL



DECK TOLERANCE $\pm 1/2$ "
TABLE HEIGHT TOLERANCES $\pm 1/2$ "
DECK FLATNESS $\pm 1/4$ "

DIMENSION TOLERANCE $\pm 1/4$ "

STANDARD FEATURES

MODEL NUMBER IS SCTABD-750-2040-DC
DECK WIDTH IS 20 3/8"
DECK LENGTH IS 40 3/8"
RAISED HEIGHT IS 35"
LOWERED HEIGHT IS 7"
TABLE CAPACITY (EVENLY DISTRIBUTED)
MAX CAPACITY IS 750 LBS
CONTROL IS HANDHELD 2 BUTTON, NEMA 4 PENDANT
WITH MINIMUM 8' USABLE COIL CORD
SAFETY MAINTENANCE PROPS, DISPLACEMENT
STYLE CYLINDERS INSTALLED ROD DOWN
EMERGENCY SAFETY STOP HYDRAULIC FUSES
UPPER TRAVEL LIMIT SWITCH
ELECTRIC PINCH POINT GUARD
DURABLE LIQUID PAINT BLUE FINISH

SPECIAL FEATURES

NONE

APPROVAL

I, THE UNDERSIGNED, AGREE THAT THE PRODUCT AS REPRESENTED SATISFIES DESIGN AND DIMENSION REQUIREMENTS. I ALSO ACKNOWLEDGE MY DUTY TO CONFIRM PRODUCT AND INSTALLATION COMPLIANCE WITH ALL APPLICABLE FEDERAL, STATE AND LOCAL REGULATIONS AND STANDARDS.

ANY MODIFIED UNITS ARE NON-RETURNABLE

[] As drawn [] As marked

Signed: _____ Date: _____

Printed Name: _____

LEAD TIME WILL START UPON RECEIPT OF SIGNED APPROVAL DRAWING

FOR INTERNAL USE ONLY
PROJECT SIGN OFF

SALES	
ENG.	
FAB.	
POWER	

DISTRIBUTOR'S NAME:

VESTIL MANUFACTURING

DRAWN BY: CRA

DATE: 10/2/2017

REFERENCE: X

SCALE: 1:16

QUOTED LEAD TIME: X

QUOTE # X

P.O.# X

W.O.# X

SALES: X

FILE NAME:

01-007-368