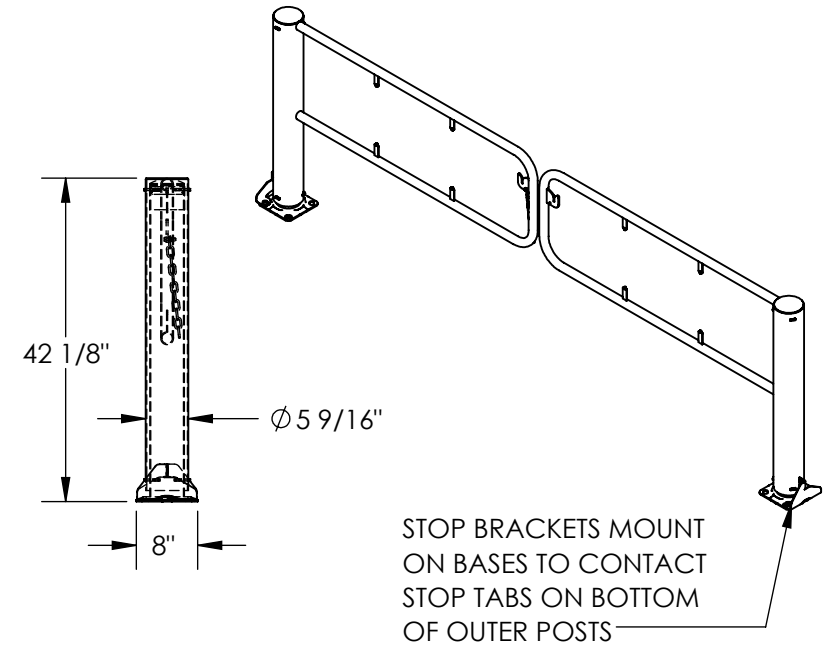
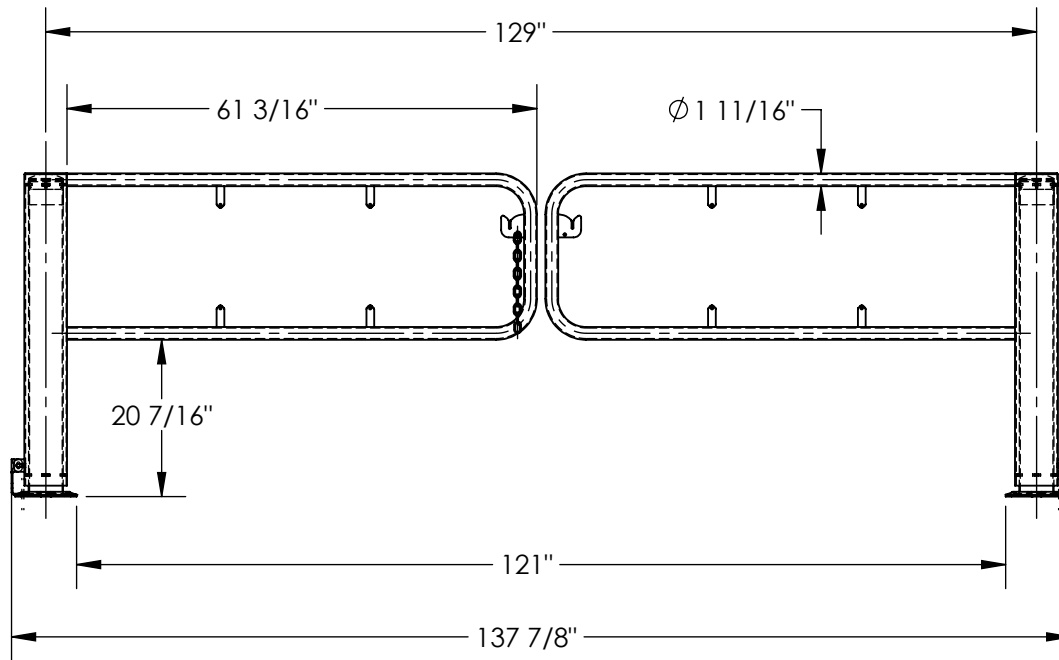


SWIVEL DOCK GATE: SDG-10

APPROX WEIGHT: 159.99 lbs.
DOES NOT INCLUDE WEIGHT OF POWER OR PACKAGING!!!

*** ANY ADDITIONS, DELETIONS, OR OMISSIONS MUST BE CORRECTED ON THIS DRAWING AS THIS DRAWING WILL BE CONSIDERED ALL INCLUSIVE ***

ALL GRAPHICS PROVIDED ARE FOR REFERENCE ONLY. IF CERTAIN DIMENSIONS ARE CRITICAL PLEASE VERIFY THOSE DIMENSIONS WITH YOUR SALESPERSON

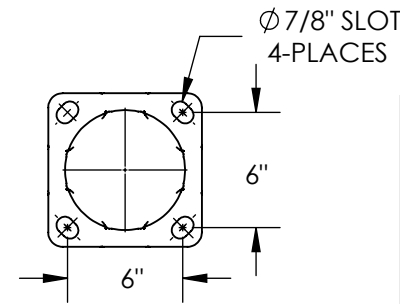


STANDARD FEATURES

- MODEL NUMBER IS SDG-10
- OVERALL WIDTH: 137 7/8"
- INNER WIDTH: 121"
- OVERALL HEIGHT: 42 1/16"
- OVERALL DEPTH: 8"
- LAG DOWN MOUNTING PLATES: 5/8" x 8" x 8"
WITH (4) Ø7/8" x 1 1/4" MOUNTING SLOTS
- FOR Ø3/4" ANCHOR BOLTS (SOLD SEPARATELY)
- RIGHT AND LEFT GATES CLOSE AND LATCH WITH CHAIN SWINGS MANUALLY UP TO 355°
- STEEL CONSTRUCTION
- DURABLE BAKED IN POWDER COATED YELLOW FINISH

SPECIAL FEATURES

NONE



MOUNTING PLATES
SCALE 1:10

DIMENSION TOLERANCE ± 1/4"

APPROVAL	I, THE UNDERSIGNED, AGREE THAT THE PRODUCT AS REPRESENTED SATISFIES DESIGN AND DIMENSION REQUIREMENTS. I ALSO ACKNOWLEDGE MY DUTY TO CONFIRM PRODUCT AND INSTALLATION COMPLIANCE WITH ALL APPLICABLE FEDERAL, STATE AND LOCAL REGULATIONS AND STANDARDS.	
	UNITS REQUIRING APPROVAL DRAWINGS OR MODIFIED ARE NON-RETURNABLE	
	[] As drawn [] As marked	
Signed: _____		Date: _____
Printed Name: _____		
LEAD TIME WILL START UPON RECEIPT OF SIGNED APPROVAL DRAWING		

DISTRIBUTOR'S NAME:		P.O.#
VESTIL MANUFACTURING		X
DRAWN BY: RAL		DATE: 06/24/14
REFERENCE: X		SCALE: 1:25
QUOTED LEAD TIME: X		QUOTE # X
		SALES: X
		FILE NAME: 23-007-521