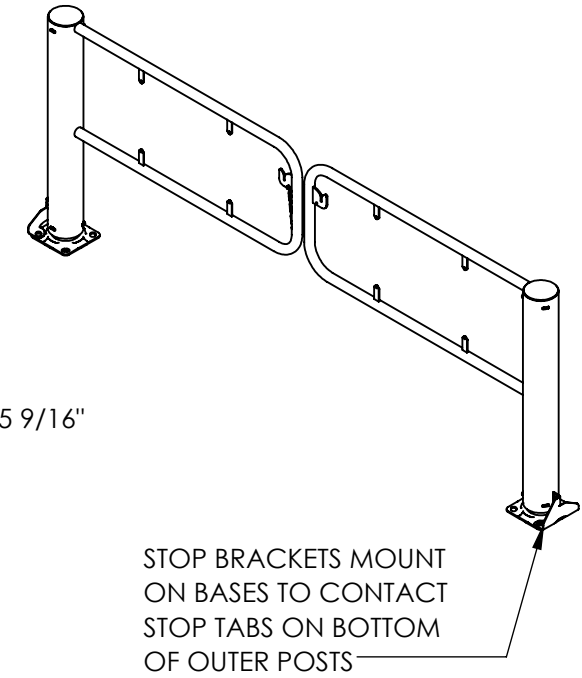
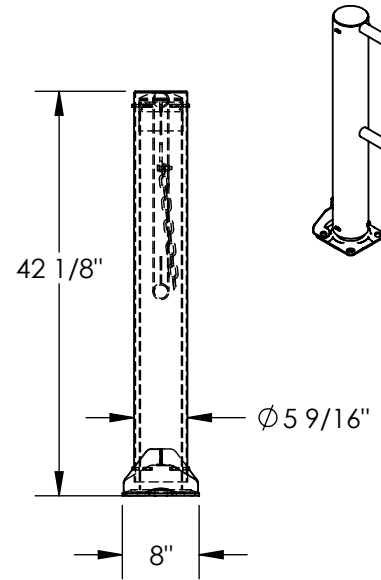
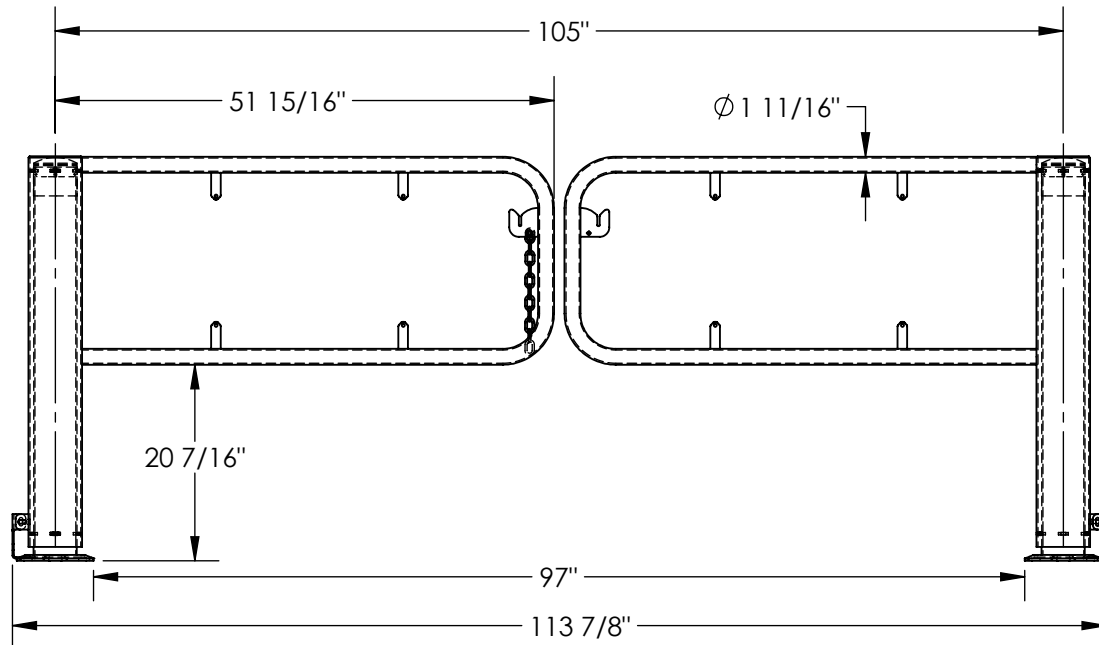


SWIVEL DOCK GATE: SDG-8

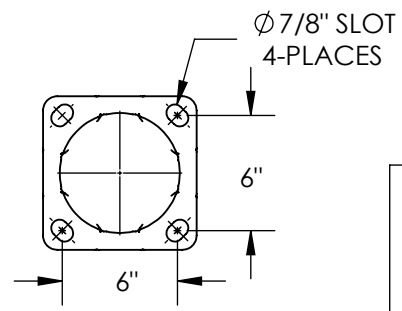
APPROX WEIGHT: 150.89 lbs.
 DOES NOT INCLUDE WEIGHT OF POWER OR PACKAGING!!!

*** ANY ADDITIONS, DELETIONS, OR OMISSIONS MUST BE CORRECTED ON THIS DRAWING AS THIS DRAWING WILL BE CONSIDERED ALL INCLUSIVE ***

ALL GRAPHICS PROVIDED ARE FOR REFERENCE ONLY. IF CERTAIN DIMENSIONS ARE CRITICAL PLEASE VERIFY THOSE DIMENSIONS WITH YOUR SALESPERSON



STOP BRACKETS MOUNT ON BASES TO CONTACT STOP TABS ON BOTTOM OF OUTER POSTS



MOUNTING PLATES
 SCALE 1:10

STANDARD FEATURES

- MODEL NUMBER: SDG-8
- OVERALL WIDTH: 113 7/8"
- INNER WIDTH: 97"
- OVERALL HEIGHT: 42 1/8"
- OVERALL DEPTH: 8"
- LAG DOWN MOUNTING PLATES: 5/8" x 8" x 8"
- WITH (4) Ø7/8" x 1 1/4" MOUNTING SLOTS
- FOR Ø3/4" ANCHOR BOLTS (SOLD SEPARATELY)
- RIGHT AND LEFT GATES CLOSE AND LATCH WITH CHAIN
- SWINGS MANUALLY UP TO 355°
- STEEL CONSTRUCTION
- DURABLE BAKED IN POWDER COATED YELLOW FINISH

SPECIAL FEATURES

NONE

DIMENSION TOLERANCE ± 1/4"

I, THE UNDERSIGNED, AGREE THAT THE PRODUCT AS REPRESENTED SATISFIES DESIGN AND DIMENSION REQUIREMENTS. I ALSO ACKNOWLEDGE MY DUTY TO CONFIRM PRODUCT AND INSTALLATION COMPLIANCE WITH ALL APPLICABLE FEDERAL, STATE AND LOCAL REGULATIONS AND STANDARDS.

UNITS REQUIRING APPROVAL DRAWINGS OR MODIFIED ARE NON-RETURNABLE

[] As drawn [] As marked

Signed: _____ Date: _____

Printed Name: _____

LEAD TIME WILL START UPON RECEIPT OF SIGNED APPROVAL DRAWING

DISTRIBUTOR'S NAME:		P.O.#
VESTIL MANUFACTURING		X
DRAWN BY: RAL		W.O.#
DATE: 06/24/14		X
REFERENCE: X	SCALE: 1:20	SALES: X
QUOTED LEAD TIME: X	QUOTE #	FILE NAME:
	X	23-007-519