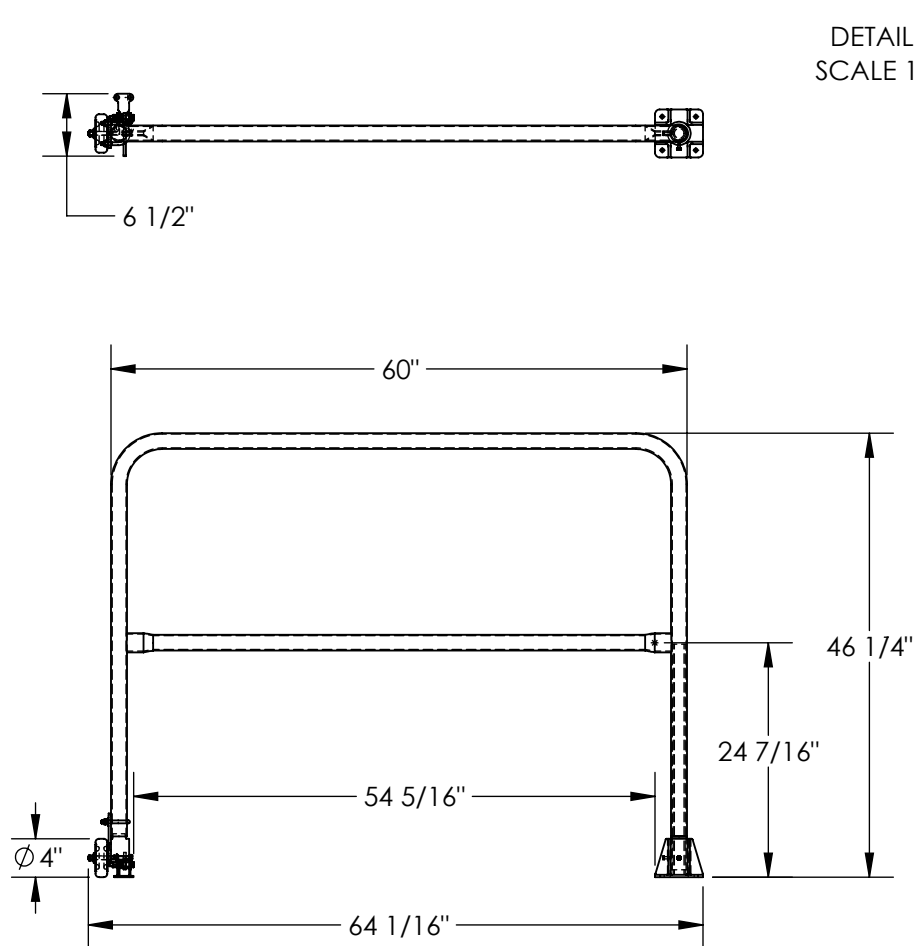


# SAFETY SWING GATE - SSG-5-BK

APPROX WEIGHT: 44.25 lbs.  
DOES NOT INCLUDE WEIGHT OF POWER OR PACKAGING!!!

\*\*\* ANY ADDITIONS, DELETIONS, OR OMISSIONS MUST BE CORRECTED ON THIS DRAWING AS THIS DRAWING WILL BE CONSIDERED ALL INCLUSIVE \*\*\*  
ALL GRAPHICS PROVIDED ARE FOR REFERENCE ONLY. IF CERTAIN DIMENSIONS ARE CRITICAL PLEASE VERIFY THOSE DIMENSIONS WITH YOUR SALESPERSON



GATE OPENS IN JUST ONE DIRECTION.  
LATCH CAN BE POSITIONED TO ALLOW  
OPENING EITHER WAY. HINGE END CAN  
BE LOCATED ON RIGHT OR LEFT SIDE.

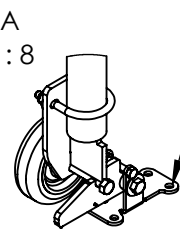
## STANDARD FEATURES

MODEL NUMBER: SSG-5-BK  
OVERALL WIDTH: 6 1/2"  
OVERALL LENGTH: 64 1/16"  
INSIDE OPENING LENGTH: 54 5/16"  
GATE LENGTH: 60"  
OVERALL HEIGHT: 46 1/4"  
WELDED STEEL CONSTRUCTION  
TOUGH BAKED IN POWDER COATED BLACK FINISH

## SPECIAL FEATURES

NONE

DETAIL A  
SCALE 1 : 8



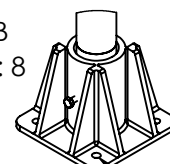
Ø 1 1/32" HOLES FOR  
MOUNTING LATCH TO FLOOR  
(4-PLACES)

OPENING  
DIRECTION

DEPRESS RELEASE LEVER  
TO OPEN GATE

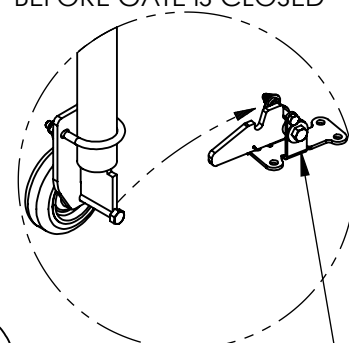
LATCH END

DETAIL B  
SCALE 1 : 8



Ø 3/8" HOLES FOR  
MOUNTING HINGE TO FLOOR  
(4-PLACES)

LATCH END SHOWN  
BEFORE GATE IS CLOSED



LATCH MAY  
BE ROTATED  
180° TO ALLOW  
GATE OPENING IN  
OPP. DIRECTION

HINGE END

DIMENSION TOLERANCE ± 1/4"

APPROVAL

I, THE UNDERSIGNED, AGREE THAT THE PRODUCT AS  
REPRESENTED SATISFIES DESIGN AND DIMENSION  
REQUIREMENTS. I ALSO ACKNOWLEDGE MY DUTY TO  
CONFIRM PRODUCT AND INSTALLATION  
COMPLIANCE WITH ALL APPLICABLE FEDERAL, STATE  
AND LOCAL REGULATIONS AND STANDARDS.  
**UNITS REQUIRING APPROVAL DRAWINGS OR  
MODIFIED ARE NON-RETURNABLE**  
[ ] As drawn [ ] As marked

Signed: \_\_\_\_\_ Date: \_\_\_\_\_

Printed Name: \_\_\_\_\_

LEAD TIME WILL START UPON RECEIPT OF SIGNED APPROVAL DRAWING

DISTRIBUTOR'S NAME:

VESTIL MANUFACTURING

DRAWN BY: JGP

DATE: 5/7/2021

REFERENCE: X

SCALE: 1:20

QUOTED LEAD TIME: X

QUOTE #  
X

P.O.#  
X

W.O.#  
X

SALES: X

FILE NAME:

23-007-825-001