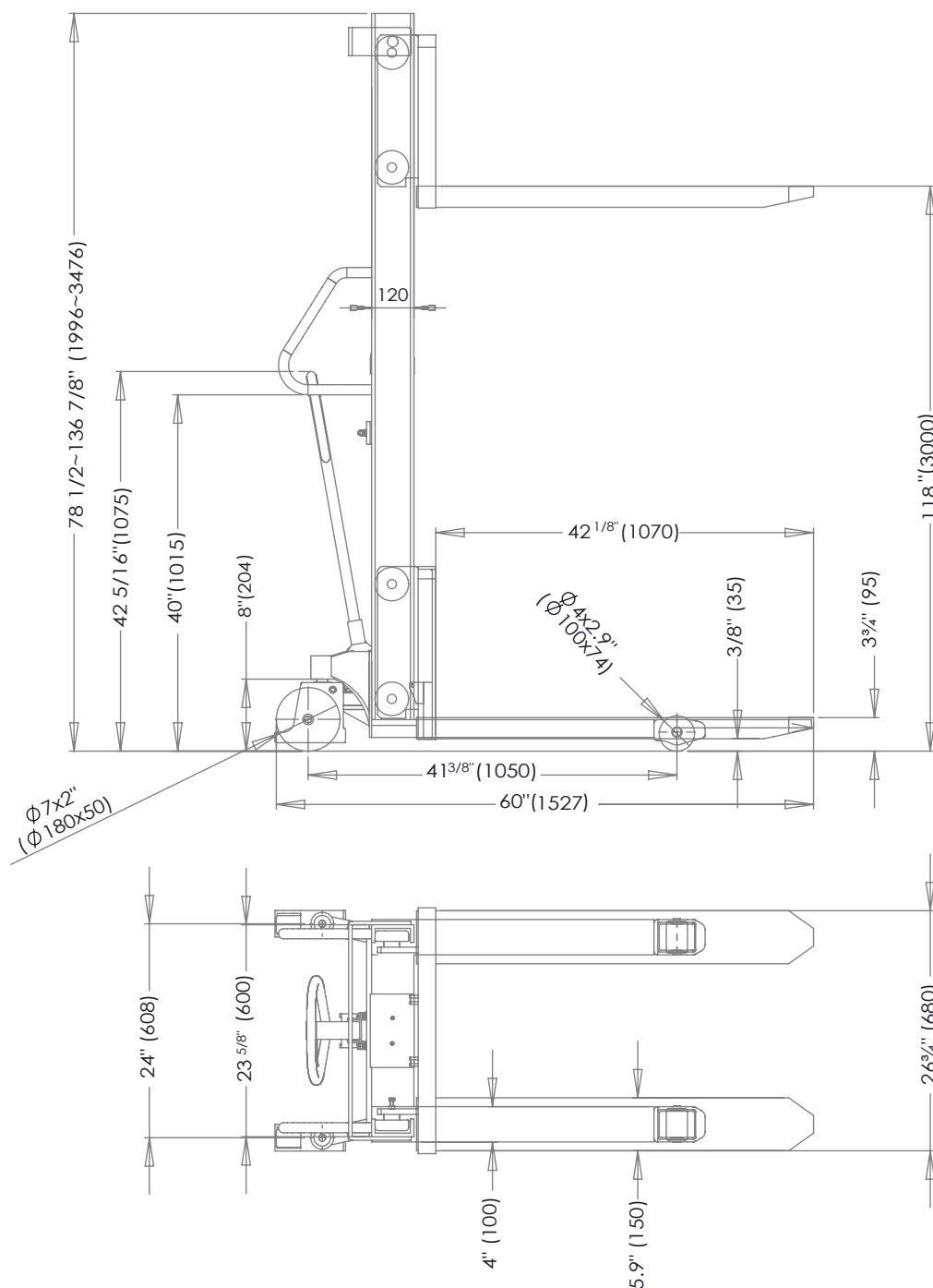


STEEL STACKER MANUAL PUMP - VHPS-2000-FF-118

APPROX WEIGHT: 630 lbs.
DOES NOT INCLUDE WEIGHT OF POWER OR PACKAGING!!!

*** ANY ADDITIONS, DELETIONS, OR OMISSIONS MUST BE CORRECTED ON THIS DRAWING AS THIS DRAWING WILL BE CONSIDERED ALL INCLUSIVE ***

ALL GRAPHICS PROVIDED ARE FOR REFERENCE ONLY. IF CERTAIN DIMENSIONS ARE CRITICAL PLEASE VERIFY THOSE DIMENSIONS WITH YOUR SALESPERSON



SPECIFICATIONS

MODEL NO: VHPS-2000-FF-118
CAPACITY (UDL): 2,000 lbs UP TO 63"
CAPACITY (UDL): 1,500 lbs UP TO 118"
LIFT HEIGHT: 118"
LOWERED HEIGHT: 3 3/4"
FIXED FORKS OVER FIXED LEGS
MAST: DOUBLE
MAST LOWERED HEIGHT: 78 1/2"
MAST RAISED HEIGHT: 136 7/8"
STEERING WHEELS: Ø7" x 2"
FRONT WHEELS: Ø4" x 2.9"
LIFT PER HYDRAULIC HAND PUMP: 1 3/16"
TOUGH BAKED IN POWDER COATED
BLACK AND YELLOW FINISH

DIMENSION TOLERANCE ± 1/2"

APPROVAL

I, THE UNDERSIGNED, AGREE THAT THE PRODUCT AS REPRESENTED SATISFIES DESIGN AND DIMENSION REQUIREMENTS. I ALSO ACKNOWLEDGE MY DUTY TO CONFIRM PRODUCT AND INSTALLATION COMPLIANCE WITH ALL APPLICABLE FEDERAL, STATE AND LOCAL REGULATIONS AND STANDARDS.

UNITS REQUIRING APPROVAL DRAWINGS OR MODIFIED ARE NON-RETURNABLE

[] As drawn [] As marked

Signed: _____ Date: _____

Printed Name: _____

LEAD TIME WILL START UPON RECEIPT OF SIGNED APPROVAL DRAWING

DISTRIBUTOR'S NAME:		P.O.#
VESTIL MANUFACTURING		X
DRAWN BY: TM		W.O.#
DATE: 09/28/2021		X
REFERENCE: X	SCALE: NTS	SALES: X
QUOTED LEAD TIME: X	QUOTE #	FILE NAME:
	X	VHPS-2000-FF-118