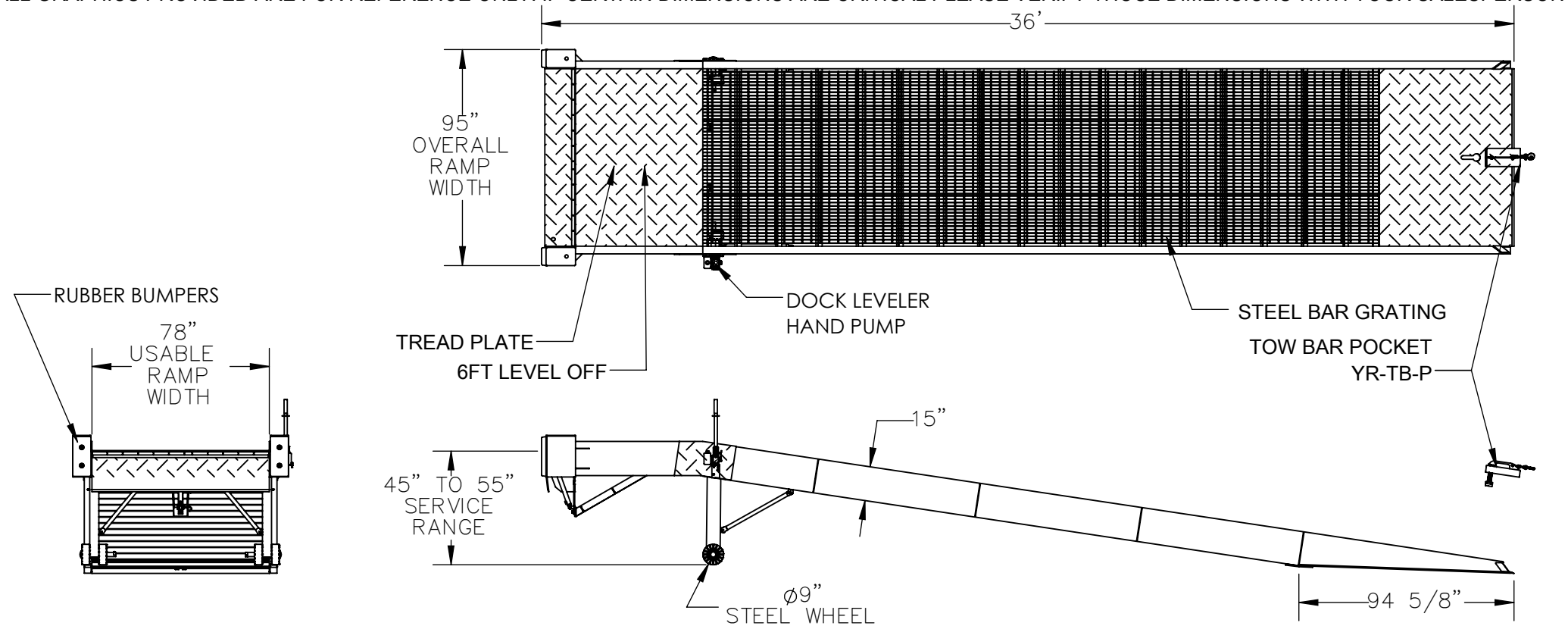


STEEL YARD RAMP HYDRAULIC DOCKLEVELER - YRD-20-8536-H

APPROX WEIGHT: 7263.55 lbs.  
DOES NOT INCLUDE WEIGHT OF POWER OR PACKAGING!!!

\*\*\* ANY ADDITIONS, DELETIONS, OR OMISSIONS MUST BE CORRECTED ON THIS DRAWING AS THIS DRAWING WILL BE CONSIDERED ALL INCLUSIVE \*\*\*  
ALL GRAPHICS PROVIDED ARE FOR REFERENCE ONLY. IF CERTAIN DIMENSIONS ARE CRITICAL PLEASE VERIFY THOSE DIMENSIONS WITH YOUR SALESPERSON



STANDARD FEATURES

MODEL NUMBER IS YRD-20-8536-H  
OVERALL RAMP WIDTH IS 95 INCHES  
USABLE RAMP WIDTH IS 78 INCHES  
OVERALL LENGTH IS 36 FEET  
RAMP SERVICE HEIGHT IS 45 INCHES TO 55 INCHES  
RAMP CAPACITY IS 20,000 LBS.  
4" HIGH SAFETY CURBS WITH SLOPED ENDS  
SAFETY CHAIN STANDARD ( NOT SHOWN )  
INCLUDES TOW BAR POCKET, MODEL # YR-TB-P  
HAND PUMP HYDRAULIC OPERATED EDGE O DOCK  
DURABLE LIQUID PAINT BROWN FINISH

SPECIAL FEATURES

NONE

APPROVAL

I, THE UNDERSIGNED, AGREE THAT THE PRODUCT AS REPRESENTED SATISFIES DESIGN AND DIMENSION REQUIREMENTS. I ALSO ACKNOWLEDGE MY DUTY TO CONFIRM PRODUCT AND INSTALLATION COMPLIANCE WITH ALL APPLICABLE FEDERAL, STATE AND LOCAL REGULATIONS AND STANDARDS.  
**UNITS REQUIRING APPROVAL DRAWINGS OR MODIFIED ARE NON-RETURNABLE**  
[ ] As drawn [ ] As marked

Signed: \_\_\_\_\_ Date: \_\_\_\_\_

Printed Name: \_\_\_\_\_

LEAD TIME WILL START UPON RECEIPT OF SIGNED APPROVAL DRAWING

DISTRIBUTOR'S NAME:		P.O.#
VESTIL MANUFACTURING		X
DRAWN BY: X		W.O.#
DATE: XX/XX/XX		X
REFERENCE: X	SCALE: 1:64	SALES: X
QUOTED LEAD TIME: X	QUOTE # X	FILE NAME:
		18-007-217