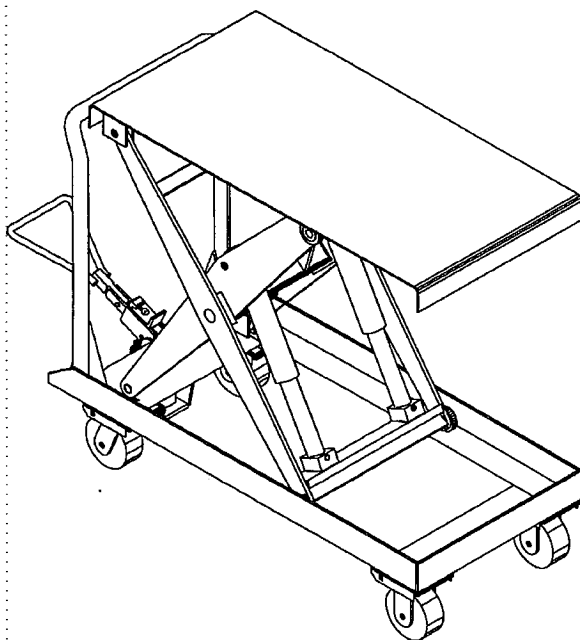


Please read and save these instructions. Read carefully before attempting to assemble, install, operate or maintain the product described. Protect yourself and others by observing all safety information. Failure to comply with instructions could result in personal injury and/or property damage! Retain instructions for future reference.

Hydraulic Elevating Carts

Description

Portable ergonomic elevating carts minimize worker bending and lifting. Materials can be easily loaded onto platform of cart, lowered to safe transporting height, and raised to unload at destination. Moves easily on four polyurethane caster; two swivel with brake and two rigid. All models feature a down speed control valve, internal hydraulic velocity fuse in each cylinder and an exclusive automatic two-speed manual hydraulic foot pump. All steel construction. Powder coated red finish. Failure to follow the proper operating instructions could result in injury.



IT-2000

Unpacking

After receiving a hydraulic elevating cart, visually inspect the frame components and hydraulic unit for damage. If damage is evident, notify delivering carrier immediately and file necessary claims.

Specifications and Dimensions

Load Capacity	Platform Width	Platform Length	Lowered Height	Raised Height	Model Number	Weight (lbs.)
2,000 lbs.	20"	40"	15"	39"	CART-2000	625

General Safety Information

1. Not a personnel lift. Keep clear when operating.
2. Never go under platform if there is weight on the unit.
3. Remove weight before working on unit.
4. Use only maintenance parts supplied or approved by the manufacturer.
5. Do not change pressure relief valve setting.
6. Do not clamp cylinder in a vise as you may distort barrel.
7. Never operate lift unless you are watching it.
8. Load lift as uniformly as possible.
9. Consult factory for uneven loading.
10. Do not continue to pump if unit is not raising.
11. Relieve system pressure by slowly operating pressure release mechanism.
12. Consult factory if any modifications are going to be made.
13. Do not use brake fluids or jack oils. Use AW-32 or hydraulic oils.

Assembly

TOOLS REQUIRED: (2) 9/16 in box end wrenches

After unpacking the cart locate the handle and the hardware to install it. Line up the mounting holes on the handle with the holes in the frame and install and tighten the bolts. Your cart is now ready for use.

Hydraulic Elevating Carts

Foot Pump Operation

Your new lift equipment has been supplied with our exclusive 2-speed foot pump. The initial features of your pump includes a primary pressure relief, pressure compensated return flow control valve, and an integrated lowering valve. Replaceable bushings, valve components, and seals have been utilized in the construction of the pump in the event that replacements are necessary.

Stay clear of moving parts. The platform will rise as the foot pedal is pumped. Depressing the lowering valve will lower the table at a controlled rate of descent.

In the event the platform has been overloaded, the pressure relief will open because of excessive pressure buildup in the hydraulic system. Oil will bypass into the reservoir. NEVER change the pressure relief setting. DO NOT exceed the rated capacity of your lift equipment.

SPEED SELECTION FOR TWO-SPEED PUMPS

This pump offers two "speeds". The low speed setting produces low volume/high pressure. The high speed setting produces high volume/low pressure. The operator has the option of selecting the optimum pump speed for the application at hand. Pump speeds are selected by sliding the "lock collar" (See below) in or out. An occasional drop of oil will keep the collar working freely.

AIR BLEED PROCEDURE

Whether your pump is a new installation, or has been recently serviced, air has likely entered the hydraulic system. The design of this pump includes an "air bleed screw"

which will aid in the removal of unwanted air from the foot pump area of hydraulic system. Use the following steps to remove this air from the system.

1. Check all fittings to be sure they are tight. Ensure that the oil is filled to within 1" of the top of the reservoir when the lift is in the fully lowered position.
2. Locate the "air bleed screw" (see figure 3) and loosen approximately 1/2 turn counterclockwise. As soon as you have loosened the screw, slowly depress the foot pedal. This will force the air out of the pump chamber. Before you let the pump pedal return to the "up" or "home" position, tighten the air bleed screw. This will prevent air from reentering the pump chamber. Repeat the above procedure until the pump chamber is completely filled with oil and a "spongy" feel is no longer present. If the air bleeding procedure has been successful, the feel of the pump pedal will be firm and the complete stroke of the pump will produce fluid flow.

Maintenance

All bushings and bearings are of the pre-lubricated type and will last for a long period of time without additional lubrication. To increase bearing life, it is recommended that a few drops of light machine oil be applied at each pivot point every 6 to 12 months.

DAILY

Visually check and do not use if any of the following are visible:

1. Oil Leaks.
2. Structural deformation of legs or frame.
3. Unusual noise or binding
4. Check casters for proper operation.

MONTHLY

1. Check for oil leaks.
2. Check clevis and pivot points for wear.
3. Check rollers for looseness and wear.
4. Check for unusual noise.
5. Make sure all warning labels are in place and in good condition.
6. Clean off dirt and debris.

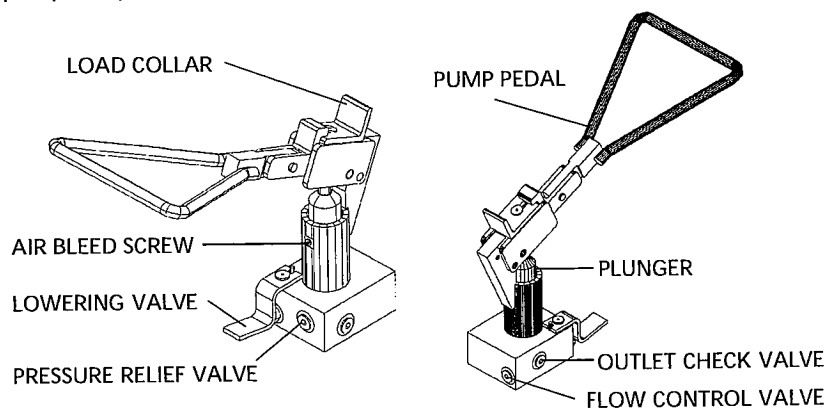


Figure 3 - Foot Pump Operation

Model CART-2000

YEARLY

Hydraulic oil should be changed at least once a year, or sooner if the oil darkens or becomes gritty. Flush reservoir before refilling. Presence of water is indicated if the oil turns milky. Recommended oil: AW-32 hydraulic fluid or equal.

All maintenance work must be performed by qualified personnel with training in the repair of electrical and hydraulic components.

NOTE: If hydraulic oil is milky white in color, water is in the hydraulic system. Change the hydraulic oil immediately.

TO FILL UNIT WITH OIL

1. Raise the platform and block the leg assembly in the fully raised position.
2. Remove the upper cylinder pin.
3. Loosen the set screw in the lowering rod linkage.
4. Release the lowering valve.
5. Collapse the cylinder rod back inside the cylinder.
6. Remove the oil fill plug.
7. With the cylinder horizontal, fill

with AW-32 grade hydraulic oil (or equivalent).

8. Reinstall the fill plug, and then reinstall the cylinder.

TO BLEED SYSTEM

1. Ensure platform is in lowered position.
2. Operate the lowering mechanism and pump the foot control several times slowly.

TO FILL WITH OIL LOW OIL CONDITION

1. Raise the unit as far as it will go.
2. Remove the oil fill plug.
3. Add oil 1 oz. at a time.
4. Pump the foot control.
5. Repeat steps 3 and 4 until the unit's maximum height is achieved.
6. Once the maximum height is reached, add 1 oz. of oil and reinstall the fill plug.

IF CART LEAKS DOWN

1. Completely lower the platform. By hand, grasp the deck at the hinge end of the leg assembly. Raise the deck as high as possible, then

carefully, while standing aside, allow the assembly to drop. This procedure draws oil through the load holding check valve and "washes" debris (if present) from the ball and seat of the device. It may be necessary to repeat this procedure a couple of times to remove all debris from the check valve thus, eliminating table drift.

2. Check the oil level in the pump assembly. The oil should be level with the bottom of the hole with the scissor legs in the lowered position. (Deck tilts up).

NOTE: If these steps fail to return the unit to service, contact supplier for further instructions.

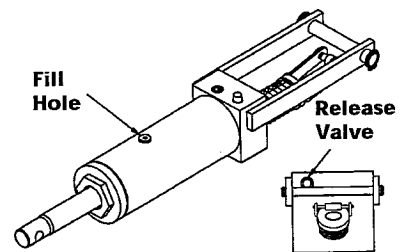
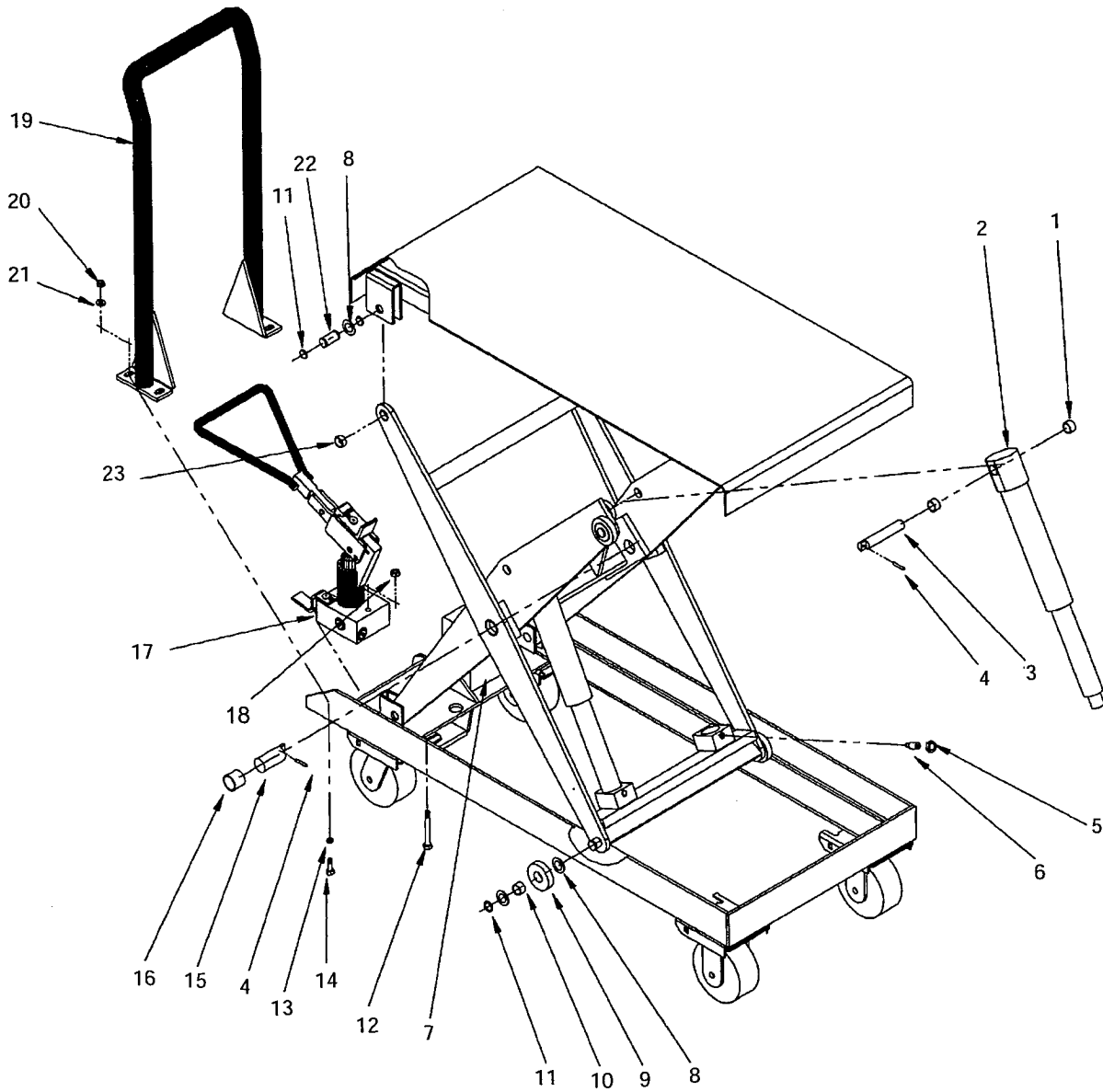


Figure 2 - How to Add Oil

For Replacement Parts, call 1-800-348-0860



Replacement Parts List for Hydraulic Elevating Cart - CART-2000

Reference Number	Description	Engineer Number	Part Number	Quantity
1	Bearing Sleeve 3/4" D x 3/4" lg.	01-111-009	C2001-2	4
2	Cylinder, Hydraulic 1-1/2" D x 7" STK	01-021-030	C2002-2	2
3	Pin, Cylinder Pivot 3/4" D x 4-1/4" lg.	01-112-010	C2003-2	2
4	Pin, Spring 3/16" D x 1-1/8" lg.	64134	C2004-2	4
5	Nut, Jam 1/2"-13 unc	36209	C2005-2	2
6	Bolt, Cylinder Retaining	01-118-002	C2006-2	2
7	Reservoir, Plastic Tank	01-023-003	C2007-2	1
8	Shim, Machine Busing 3/4" ID x 18 ga.	33424	C2008-2	12
9	Roller, 2-1/4" D x 1/2" W	01-027-002	C2009-2	4
10	Bearing, Sleeve 3/4" D x 1/2" lg.	01-111-008	C2010-2	4
11	Retainer Snap Ring, External for 3/4" D Pin	68015	C2011-2	12
12	Screw, HHCS 3/8"-16 unc x 3" lg.	11115	C2012-2	2
13	Screw, HHCS 5/16" -18 unc x 1" lg.	11055	C2013-2	4
14	Washer, Lock 5/16" nom ID	33620	C2014-2	4
15	Pin, Scissor Leg Pivot 1-1/8" D x 2-11/16" lg.	01-112-008	C2015-2	2
16	Bearing Sleeve 1-1/8" D x 1" lg.	01-111-005	C2016-2	2
17	Pump, Manual Foot 2-speed	01-640-005	C2017-2	1
18	Nut, Hex Nylock 3/8"-16 UNC	37024	C2018-2	2
19	Handle	01-525-001	C2019-2	1
20	Nut, hex Nylock 5/16"-18 UNC	37021	C2020-2	4
21	Washer, Flat 5/16" non ID	33006	C2021-2	4
22	Pin, Hinge 3/4" D x 1-7/16" lg.	01-112-009	C2022-2	4
23	Bearing, Sleeve 3/4" D x 3/8" lg.	01-111-004	C2023-2	4
24	Rigid Caster	16-132-022	C2024-2	2
25	Swivel Caster	16-132-053	C2025-2	2

For Replacement Parts, call 1-800-348-0860

Replacement Parts List for Hydraulic Elevating Cart - CART-2000

Reference Number	Description	Engineer Number	Part Number	Quantity
1	Assembly, Foot Pedal, Double Speed	n/a	VI081601	1
2	Release Lever	n/a	VI081604	1
3	Lever, First Link	n/a	VI081607	1
4	Assembly Pump Plunger	n/a	VI081605	1
5	Lever Second Link	n/a	VI081609	1
6	Outlet Check Spring (7/16" Steel Ball)	n/a	VI081610	1
7	Release Check Spring	n/a	VI081611	1
8	Inlet Check Spring (5/16" Steel Ball)	n/a	VI081612	1
9	Guide Shoulder Screw	n/a	VI081613	1
10	Guide Shoulder Screw Washer	n/a	VI081614	1
11	Release Lever Shoulder Screw	n/a	VI081615	1
12	Fitting O-Ring Plug	n/a	VI081616	1
13	Release Rod U-Cup Seal	n/a	VI081617	1
14	Fitting O-Ring Plug	n/a	VI081618	2
15	Dirt Plug	n/a	VI081619	2
16	Detent Latch Spring	n/a	VI081620	1
17	Dirt Plug Washer	n/a	VI081621	2
18	Pressure Compensated Flow Control Valve	n/a	VI081622	1
19	Sleeve Sintered Bronze Bearing	n/a	VI081623	5
20	Hexagon Socket Head Cap Screw	n/a	VI081624	1
21	Piston Return Spring	n/a	VI081625	1
22	Release Pin	n/a	VI081627	1
23	O-Ring	n/a	VI081628	3
24	Piston Wiper Seal (1.25)	n/a	VI081629	1
25	Piston U-Cup Seal (1.25)	n/a	VI081630	1
26	Piston Wiper Seal (1.00)	n/a	VI081655	1
27	Piston U-Cup Seal (1.00)	n/a	VI081656	1
28	Piston Wiper Seal (1.375)	n/a	VI081660	1
29	Piston U-Cup Seal (1.375)	n/a	VI081661	1
30	Spring Pin (0.25 x 1.5 lg.)	n/a	VI081631	1
31	Spring Pin (0.188 x 0.75 lg.)	n/a	VI081632	1
32	Round Head Groove Pin (0.375 x 1.50 lg.)	n/a	VI081633	1
33	Round Head Groove Pin (0.375 x 1 lg.)	n/a	VI081634	1
34	Round Head Groove Pin Washer	n/a	VI081635	2
35	Lever (Second Link) Roller	n/a	VI081636	1
36	Ritting Pressure Adjustment Plug	n/a	VI081641	1
37	Pressure Relief Spring	n/a	VI081642	1
38	Subassembly, Foot Pump Base	n/a	VI081644	1
39	Ground Dowell Pin (0.375 x 1.5 lg.)	n/a	VI081646	1
40	Socket Head Screw Sealing Washer	n/a	VI081647	1
41	Release Pin Seal Retaining Ring	n/a	VI081648	1
42	Assembly Hole Plug	n/a	VI081651	1
43	Detent Pin	n/a	VI081662	1
44	5/16" Steel Chrome Ball	n/a	n/a	1
45	3/8" Steel Chrome Ball	n/a	n/a	1
46	7/16" Steel Chrome Ball	n/a	n/a	1
47	Seal Kit	01-140-014	CRT2000-SK	1
48	Foot Pump Assembly	01-136-442	CRT2000-FPA	1

Hydraulic Elevating Carts

Troubleshooting Chart

Symptom	Possible Cause(s)	Corrective Action
1. Deck does not raise	a. Excessive load b. Oil is low c. Pinched hose d. Relief valve set too low	a. Remove part of the load b. Fill oil to within one inch of the top of the reservoir. c. Connect as necessary d. Increase only as necessary
2. Foot pedal goes down hard but deck does not raise	a. Particle of dirt under the pressure relief b. Particle of dirt under inlet check	a. Lower deck - disassemble, clean and reassemble pressure relief * b. Lower deck - disassemble, clean and reassemble inlet check valve*
3. Unit will pump up only under no load or when rapidly stroked, or pedal will stroke with out pumping	a. Pump is air locked b. Inlet check valve has foreign material on seat c. Relief setting is out of adjustment d. Foreign material on relief valve seat	a. Bleed air from system b. Remove and clean inlet ball and seat* c. Adjust relief setting higher d. See 2-2
4. Platform raises when the pump is stroked but lowers on return stroke	a. Outlet check is leaking	a. Clean foreign material from ball and seat
5. Deck raises but takes too much effort	a. Change pump displacement speed	a. Slide locking collar back
6. Deck raises but is too slow	a. Change pump displacement speed b. Intake filter clogged c. Foreign material stuck under pressure relief valve or under inlet check valve	a. Slide locking collar forward b. Lower deck - drain reservoir, clean and flush debris, refill with clean oil c. Lower deck - disassemble, clean and reassemble pressure relief*

* Refer to exploded view on page 14

Hydraulic Elevating Carts

Troubleshooting Chart

Symptom	Possible Cause(s)	Corrective Action
7. Spongy or jerky operation	a. Check for foreign material stuck in the deck or frame rails	a. Correct as necessary
	b. Oil is low	b. Fill oil to within one inch of the top of the reservoir
	c. Air in hydraulic system	c. See 3-3
8. Deck lowers too slowly	a. Pinched hose	a. Correct as necessary
	b. Intake filter clogged	b. Fill oil to within one inch of the top of the reservoir
	c. Foreign material lodged in velocity fuse	c. Lower deck - disassemble, clean and reassemble*
	d. Foreign material lodged in pressure compensated flow control valve	d. Lower deck - disassemble, clean and reassemble*
9. Deck lowers too fast	a. Foreign material lodged in pressure compensated flow control valve	a. Lower deck - disassemble, clean and reassemble pressure relief*
10. Deck raises but does not lower	a. Foreign material lodged in pressure compensated flow control valve	a. Lower deck - disassemble, clean and reassemble pressure relief*
	b. Release pin bent or missing	b. Replace as necessary
	c. Foreign objects blocking roller travel	c. Connect as necessary
	d. Velocity fuse is locked	d. Remove air from hydraulic system, to unlock, repressurize system (refer to hydraulic section in manual)

* Refer to exploded view on page 14

Model CART-2000

LIMITED WARRANTY

90 DAY LIMITED WARRANTY. The manufacturer warrants for the original purchaser against defects in materials and workmanship under normal use 90 days after date of purchase. Any part which is determined by the manufacturer to be defective in material or workmanship and returned to the factory, shipping costs prepaid, will be, as the exclusive remedy, repaired or replaced at our option. Labor costs for warranty repairs and/or modifications are not covered unless done at manufacturer's facilities. Any modifications performed without written approval of the manufacturer may void warranty. This limited warranty gives purchaser specific legal rights which vary from state to state.

LIMITATION OF LIABILITY. To the extent allowable under applicable law, the manufacturer's liability for consequential and incidental damages is expressly disclaimed. The manufacturer's liability in any event is limited to, and shall not exceed, the purchase price paid. Misuse or modification may void warranty.

WARRANTY DISCLAIMER. Our company has made a diligent effort to illustrate and describe the products shown accurately; however, such illustrations and descriptions are for the sole purpose of identification, and do not express or imply a warranty that the products are merchantable, or fit for a particular purpose, or that the products will necessarily conform to the illustrations or descriptions.

The provisions of the warranty shall be construed and enforced in accordance with the UNIFORM COMMERCIAL CODE and laws as enacted in the State of Indiana.

DISPOSITION. Our company will make a good faith effort for prompt correction or other adjustment with respect to any product which proves to be defective within the Limited Warranty. Warranty claims must be made in writing within said year.