

Loading Dock Equipment

OWNERS MANUAL

ANCHOR SLEEVES MODEL DBK-1 & DBK-2

Contents	
Kit Contents	1
Installation Instructions	1
User Safety Instructions	1
Assembly Drawing	1
Material Handling Problem Solvers	4

KIT CONTENTS

MODEL • DBK-1

- 4 - 3/4" x 4-1/4" lag bolts
- 4 - nuts
- 4 - washers
- 4 - anchor sleeves
- 1 - 3/4" masonry bit

MODEL • DBK-2

- 4 - 3/4" x 4-1/4" lag bolts
- 4 - nuts
- 4 - washers
- 4 - anchor sleeves

INSTALLATION INSTRUCTIONS

For proper performance and safety, follow the step by step installation procedure.

- 1.) Not recommended for use in new concrete which has not had sufficient time to cure.
- 2.) Always wear safety glasses.
- 3.) Follow the drill manufacturer's safety instructions.
- 4.) Use only Solid Carbide-Tipped drill bits.
- 5.) Drill the hole perpendicular to the work surface. To assure full holding power, do not ream the hole or allow the drill to wobble.
- 6.) Recommended minimum embedment in concrete:

Laminated Dock Bumpers

3-3/4" deep

Molded Bumpers

1-1/2" thick @ bolt hole - 2-1/2" deep

1-3/4" thick @ bolt hole - 2-1/4" deep

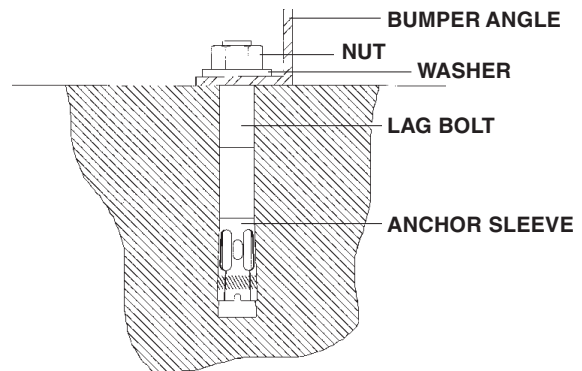
- 7.) Clean the hole using compressed air and a wire brush. A clean hole is necessary for proper performance.
- 8.) Assemble the washer and nut on the anchor so the nut protrudes slightly beyond the thread.
- 9.) Tap the anchor through the bumper and into the hole, making sure the nut or head rests solidly against the fixture.
- 10.) Tighten the nut or head 3-5 turns past the hand tight position.

USER SAFETY INSTRUCTIONS

FOR CARBIDE TIPPED MASONRY DRILL BITS

The safe operation of power tools and accessories is paramount. Use power tools that are properly grounded and comply with OSHA standards. Operator should be thoroughly trained in the safe use of the tool.

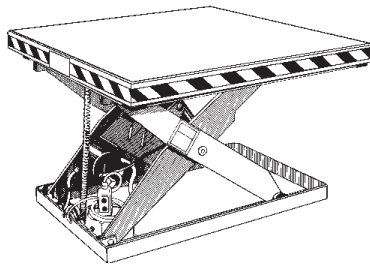
- A Hammer Drill is recommended for masonry drilling.
- Don't wear loose-fitting clothes that can become tangled in drill.
- Be sure shank is clean before inserting into tool.
- Be sure bit is firmly seated into the hammer drill.
- Clear hole frequently of dust to prevent binding.
- If drilling time increases, it is an indication the carbide tip needs resharpening. Do not continue using drill bit.
- Never drill beyond the length of the fluting.
- Never pour water into a hole while drilling.
- Avoid impenetrable objects embedded in the concrete. This may cause bit failure.
- Do not attempt to realign an off-center hole or change direction of hole.



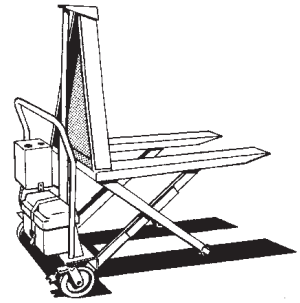
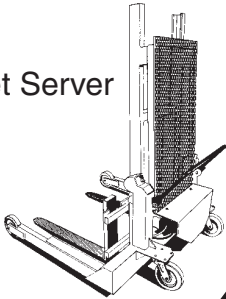
ANCHOR SLEEVES MODEL DBK-1 & DBK-2

Material Handling Problem Solvers

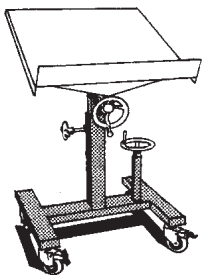
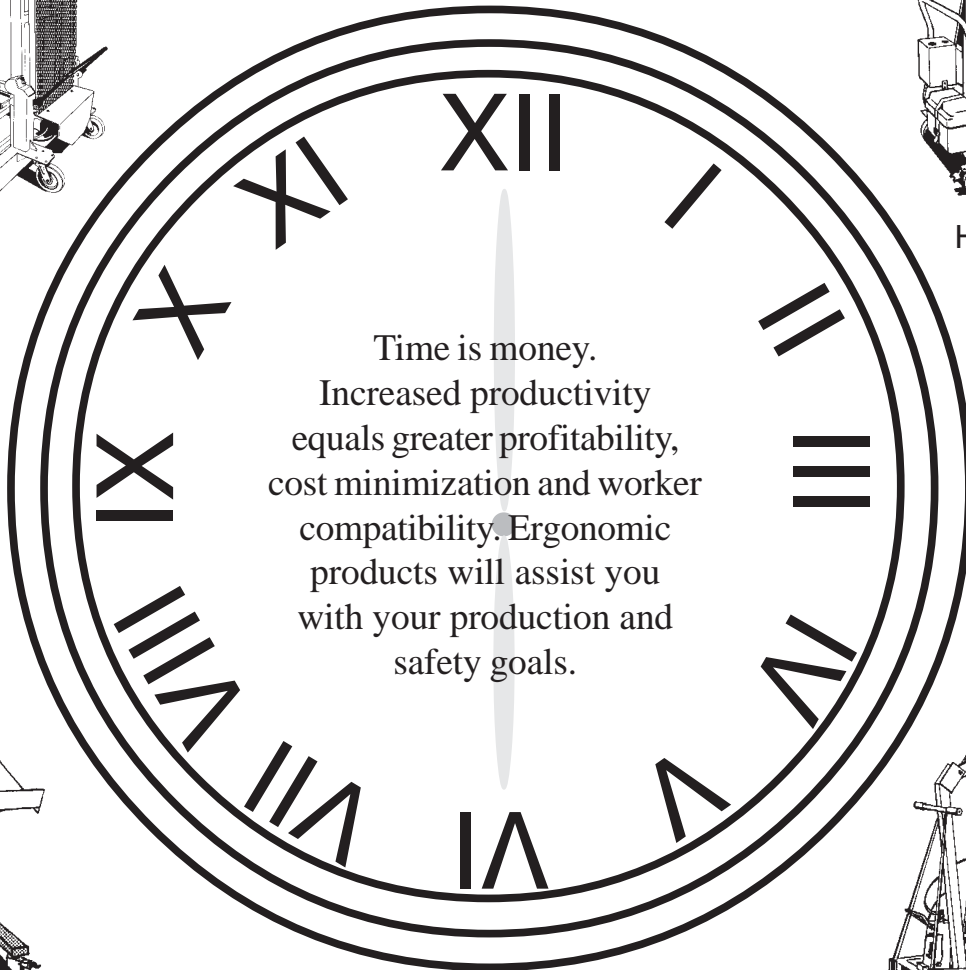
Scissor Lift Table



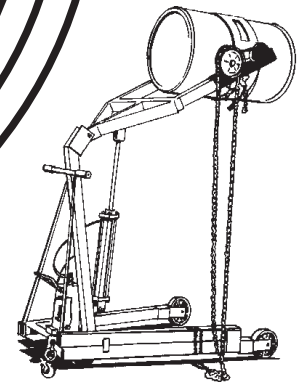
Pallet Server



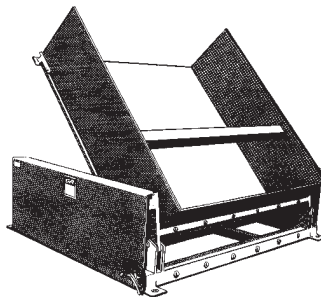
High Rise Lift



Mobile Lift & Tilt
Work Stand



Drum Carrier/Rotator



Ground Lift Tilter

LIMITED WARRANTY

Vestil Manufacturing Corporation (“Vestil”) warrants this product to be free of defects in material and workmanship during the warranty period. *Our warranty obligation is to provide a replacement for a defective original part if the part is covered by the warranty, after we receive a proper request from the warrantee (you) for warranty service.*

Who may request service?

Only a warrantee may request service. *You are a warrantee if* you purchased the product from Vestil or from an authorized distributor AND Vestil has been fully paid.

What is an “original part”?

An original part is a part used to make the product as shipped to the warrantee.

What is a “proper request”?

A request for warranty service is proper if Vestil receives: 1) a photocopy of the Customer Invoice that displays the shipping date; AND 2) a written request for warranty service including your name and phone number. Send requests by any of the following methods:

Mail
Vestil Manufacturing Corporation
2999 North Wayne Street, PO Box 507
Angola, IN 46703

Fax
(260) 665-1339
Phone
(260) 665-7586

Email
sales@vestil.com

In the written request, list the parts believed to be defective and include the address where replacements should be delivered.

What is covered under the warranty?

After Vestil receives your request for warranty service, an authorized representative will contact you to determine whether your claim is covered by the warranty. Before providing warranty service, Vestil may require you to send the entire product, or just the defective part or parts, to its facility in Angola, IN. The warranty covers defects in the following *original* dynamic components: motors, hydraulic pumps, electronic controllers, switches and cylinders. It also covers defects in *original* parts that wear under normal usage conditions (“wearing parts”): bearings, hoses, wheels, seals, brushes, batteries, and the battery charger.

How long is the warranty period?

The warranty period for original components is 15 days. The warranty period begins on the date when Vestil ships the product to the warrantee. If the product was purchased from an authorized distributor, the period begins when the distributor ships the product. Vestil may extend the warranty period for products shipped from authorized distributors by *up to* 30 days to account for shipping time.

If a defective part is covered by the warranty, what will Vestil do to correct the problem?

Vestil will provide an appropriate replacement for any *covered* part. An authorized representative of Vestil will contact you to discuss your claim.

What is not covered by the warranty?

1. Labor;
2. Freight;
3. Occurrence of any of the following, which automatically voids the warranty:
 - Product misuse;
 - Negligent operation or repair;
 - Corrosion or use in corrosive environments;
 - Inadequate or improper maintenance;
 - Damage sustained during shipping;
 - Collisions or other incidental contacts causing damage to the product;
 - Unauthorized modifications: DO NOT modify the product IN ANY WAY without first receiving written authorization from Vestil. Modification(s) might make the product unsafe to use or might cause excessive and/or abnormal wear.

Do any other warranties apply to the product?

Vestil Manufacturing Corp. makes no other express warranties. All implied warranties are disclaimed to the extent allowed by law. Any implied warranty not disclaimed is limited in scope to the terms of this Limited Warranty.

