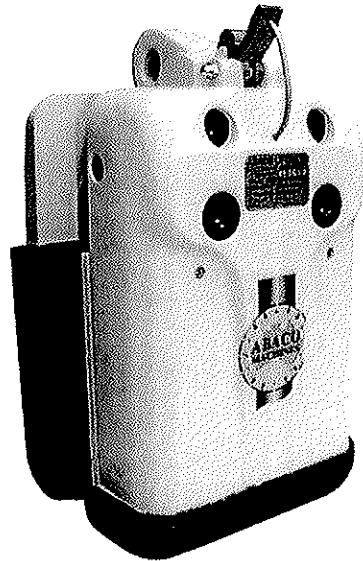


OPERATION MANUAL

**LITTLE GIANTLIFTER**



## I. Safety Instructions

- 1) Carefully consider all safety regulations and existing standards and codes in your country for hoisting operations.
- 2) Permission to work with the Abaco Lifter should only be given to people who are suitably trained, competent, and acquainted with this operating manual and safety regulations.
- 3) Inspect the clamp. If the clamp is worn or damaged, **do not** use.
- 4) Select the proper size clamp for the job by determining the weight of the slab to be lifted. **Do not** exceed W.L.L. (Working Load Limit) shown on the clamp. Slab thickness **must be** within the Grip Range specified by the manufacturer.
- 5) All personnel must stand clear of the load while it is being lifted or moved.
- 6) The grip depends of friction. Check that the rubber pads are free from dirt, grease and other substances that may reduce their effectiveness.
- 7) **Do not** lift wet slabs. Because the grip depends on friction, lifting wet slabs may cause the rubber pads to lose their grip.
- 8) No more than **one piece** of stone should be lifted at any time.
- 9) Position the clamp so that it is square with the slab to be lifted and in the center of the slab so that the load is balanced.
- 10) Make sure the slab is inserted to the full depth into the opening of the clamp.
- 11) Take up the slack **slowly**. A trial tensioning of the load will usually indicate proper balance.
- 12) Do not lower the clamp onto other slabs or material while lowering the slab into racks, as the clamp will release its load.
- 13) Before lifting any product, the SHACKLE should be inspected for wear. If wear is evident, the SHACKLE should be replaced and not used until replaced. The turning of the product while attached to the Lifter with the SHACKLE can cause early deterioration of the SHACKLE.

## B. General Safety Instructions for Hoisting Accessories:

**IMPORTANT!** In order to protect people from getting injured, it is important to follow some general safety directions while using hoisting accessories.

- 1) Read the operating manual carefully **before** you use hoisting accessories.
- 2) Make sure that the operating manual is always available where the hoisting accessories are used.

- 3) Give permission to work with hoisting accessories only to people who are suitably trained and competent.
- 4) Wear safety equipment such as a helmet, gloves, and safety boots.
- 5) **Never** leave a lifted load unsupervised.
- 6) Ensure that the Abaco Lifter is correctly fitted and in safe working order.
- 7) Lift a load only as much as is really necessary.
- 8) Do **not** get underneath the load, and do **not** permit others to do so.
- 9) Make sure all connections, bolts, and nuts are tight. Inspect these before **every** use.
- 10) Hoisting accessories must be stored in a place where they are protected against weather conditions and products that may be harmful to the accessories.
- 11) Defective hoisting accessories should no longer be used.
- 12) Repairs and checks should be made only by qualified people.
- 13) Avoid turning under a load. If turning is necessary, then inspection of the SHACKLE is required for safety. This is a wear item.

## II. Instructions For Use

### Preliminary Safety Checks:

- 1) A "Competent Person" shall check the following **before each use**
  - That the Abaco Lifter is correctly fitted and in safe working order.
  - That the SWIVEL SHACKLE securing the Abaco Lifter is correctly installed and tightened.
  - That all locating pins on the forklift boom are correctly positioned and are in safe working order and safety clipped.
- 2) Move the top of the slab out from the pack of slabs by means of a pinch bar or a wedge, allowing enough room for the back plate of the clamp to pass between the slab and the pack of the slabs. Do not move the top of the slab past the center of balance, and keep the slab in an inclined position.
- 3) Position the clamp squarely and in the center of the slab so that the load is balanced.
- 4) Make sure that the slab is inserted to the full depth into the opening of the clamp.
- 5) Unlock the locking latch so that the jaws will lock onto the slab when the lifting cable is raised.

- 6) Lift the slab slowly to ensure the load is balanced.
- 7) Before lowering the load, make sure that there are no obstructions that the load or the clamp would unintentionally rest on. In this event, the clamp can drop the load.

### III. Warranty

At the time of delivery it is necessary to check that the clamp has not been damaged during shipment. Any claims must be presented within **8 days** of the date of delivery of the product.

We grant you **6 months** warranty on the **Lifter** from the **date of purchase**.

The warranty coverage is **not** applicable:

- Whenever the clamp is handled incorrectly during maneuvering.
- Whenever the operator fails to comply with the instructions in this booklet.
- Whenever the clamp's maximum permissible capacity is exceeded.
- Whenever the specifications for slab thickness are not followed.
- When damages are due to inadequate maintenance and inspections.
- When damage is due to improper storage.
- Whenever repairs are performed by the user without our permission.
- Whenever non-original spare parts are used.

The SHACKLE is separate from the Lifter and is considered a wear item and must be inspected **before** every use. This is **not** part of this or any warranty, unless it is defective. At that time, the SHACKLE and the Lifter need to be returned to the supplier for inspection and evaluation.

### IV. Inspection, Maintenance, & Repair

It is important to establish a regular procedure for clamp & shackle inspection. Frequency of inspection will depend upon the amount of use the clamp receives.

You may wish to maintain a written record indicating inspection dates, condition of the clamp on each of those dates, and any repairs made. Inspection records should be reviewed periodically.

Lubricate the bearings once a month to ensure smooth operation.

Always use original spare parts when carrying out repairs of maintenance.

**Important:** Carefully observe the Safety Instructions supplied with the Lifting Clamp.

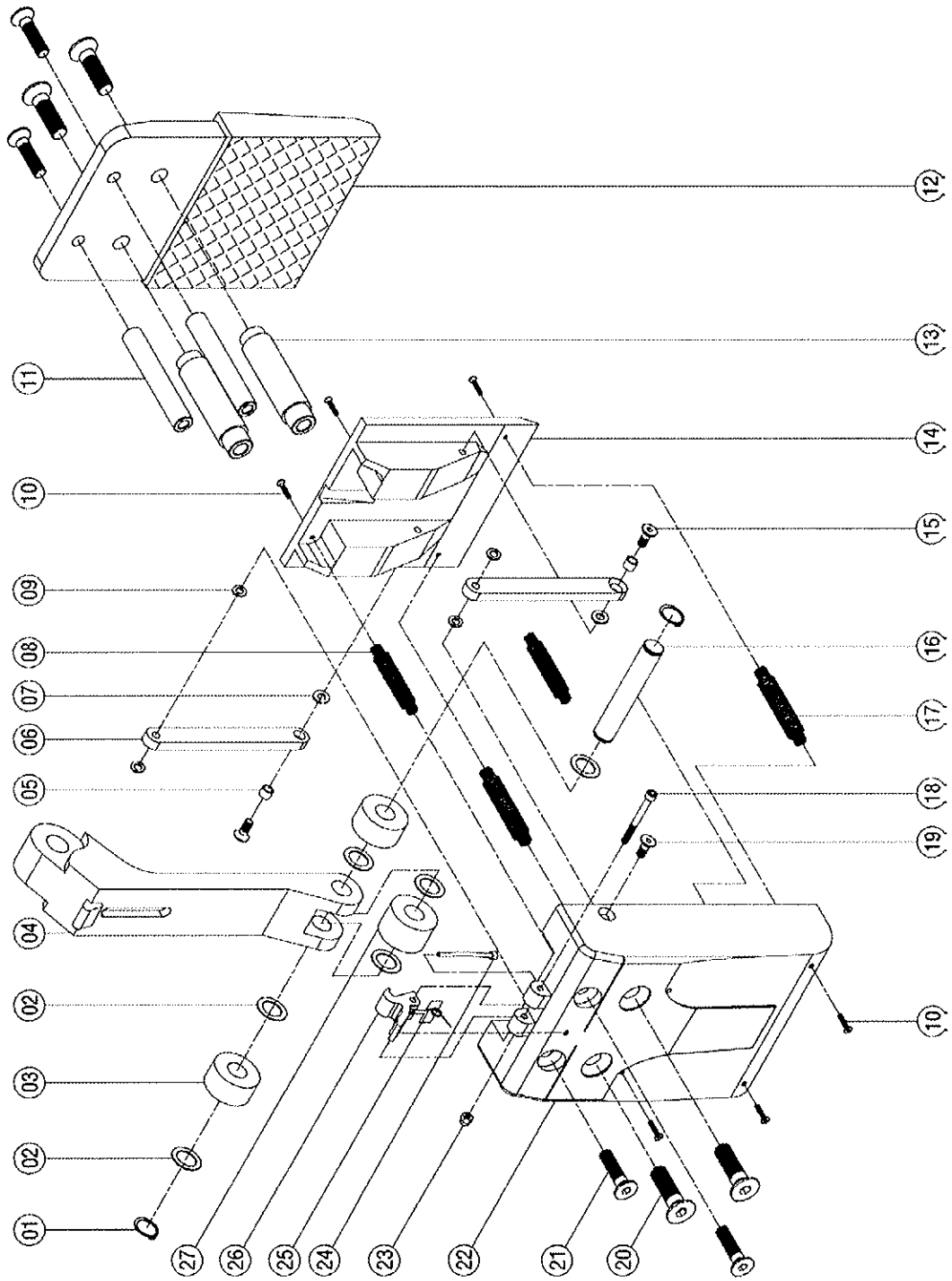
## SPARE PARTS LIST

WHEN ORDERING: PLEASE GIVE THE NUMBER OF THE SPARE PART (CODE NUMBER)

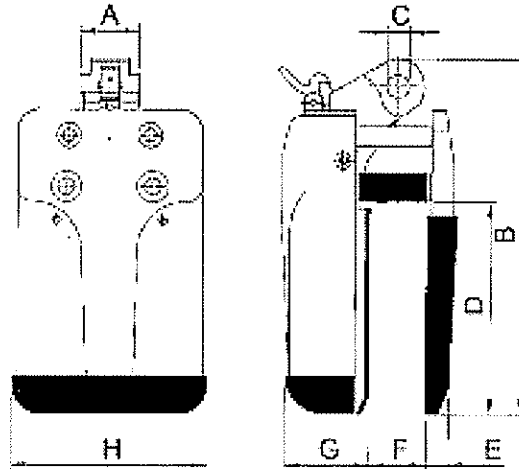
PLUS THE TYPE OF LIFTER (50-75).

Example: LIFTER 50 AL-001 QTY1, LIFTER 75 AL-007 QTY2

CODE	POS	DESCRIPTION	QTY
AL-001	1	External Circlip	2
AL-002	2	ø20 x ø28 x 0.5 Brass Washer	6
AL-003	3	Outer Pressure Wheel	2
AL-004	4	Lifting Pin	1
AL-005	5	Spacer	2
AL-006	6	Linker	2
AL-007	7	ø8 x ø16 x 1 Washer	2
AL-008	8	Top Extension Spring	2
AL-009	9	ø8 x ø14 x 0.8 Washer	4
AL-010	10	Metal Screw	8
AL-011	11	Top Pin	2
AL-012	12	Back Plate	1
AL-013	13	Bottom Pin	2
AL-014	14	Center Plate	1
AL-015	15	M8 x 20 Counter Sink Cap Screw	2
AL-016	16	Shaft	1
AL-017	17	Bottom Extension Spring	2
AL-018	18	M6 x 60 Cap Screw	1
AL-019	19	M8 x 40 Counter Sink Cap Screw	2
AL-020	20	M16 Counter Sink C/S	4
AL-021	21	M12 Counter Sink C/S	4
AL-022	22	Main Housing	1
AL-023	23	M6 Nut	1
AL-024	24	Release String	1
AL-025	25	Torsion Spring	1
AL-026	26	Locking Latch	1
AL-027	27	Inner Pressure Wheel	1



V. Technical Specifications

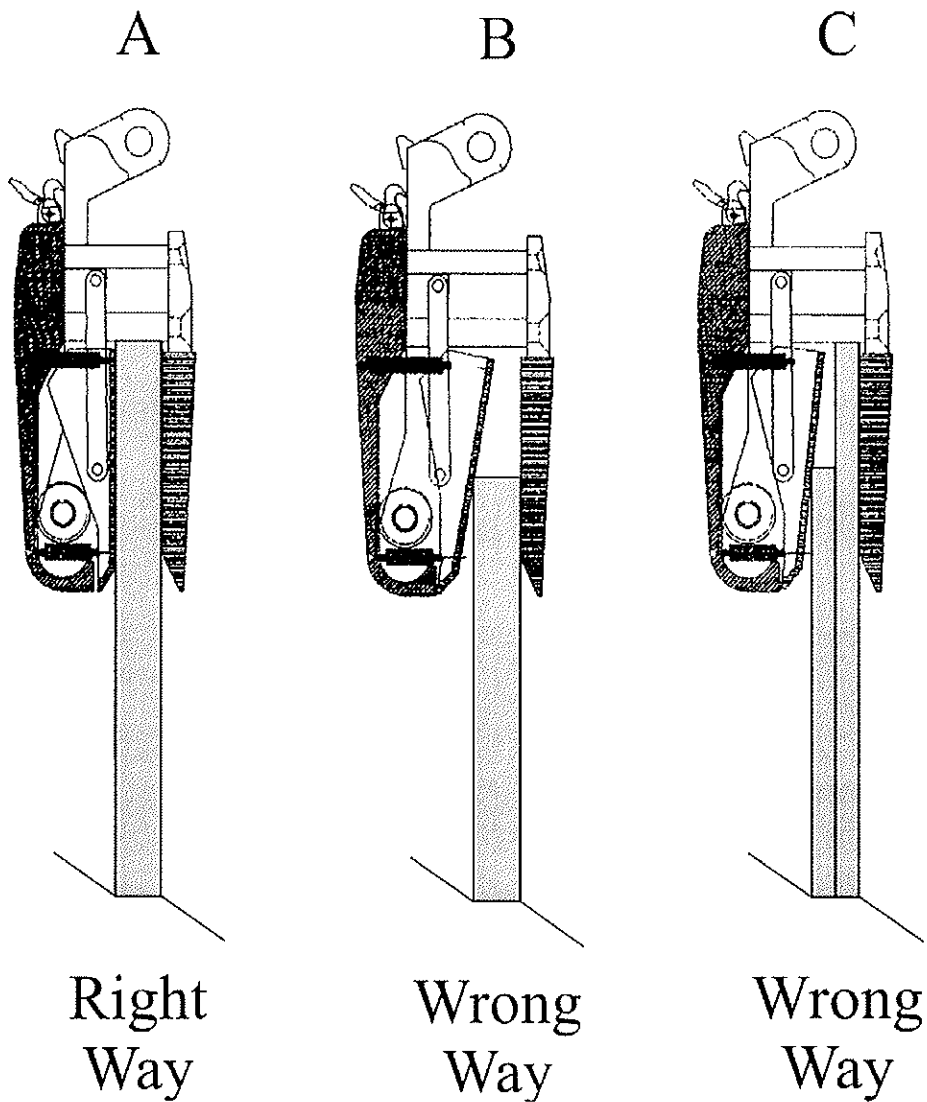


MODEL NUMBER	DIMENSIONS IN INCHES (MM)							
	A	B	C	D	E	F	G	H
SLV-50	1½ (40)	14½ (360)	1 (25)	8½ (218)	¾ (22)	2½ (54)	3¾ (86)	8¾ (214)
SLV-60	1½ (40)	15¾ (387)	1 (25)	10¾ (260)	¾ (22)	2¾ (65)	3¾ (95)	8¾ (214)
SLV-75	1½ (40)	15¾ (387)	1 (25)	10¾ (260)	¾ (22)	3 (76)	3¾ (95)	8¾ (214)

MODEL NUMBER	GRIP RANGE INCHES (MM)	CLAMP WEIGHT INCHES (MM)	MIN LOADING POUNDS (KG)	W.L.L. POUNDS (KG)
SLV-50	¾ - 2 (15 - 50)	48.5 (22)	110 (50)	2202 (1000)
SLV-60	¾ - 2¾ (20 - 60)	60.5 (27.5)	110 (50)	2202 (1000)
SLV-75	1½ - 3 (30 - 75)	60.5 (27.5)	110 (50)	2202 (1000)

## WARNINGS

- Select the proper size clamp for the job.
- Determine the weight of the slab to be lifted and **Do Not Exceed the Lifting Capacity of the Lifter.**
  - Do not exceed the W.L.L. (Working Load Limit) shown on the clamp.
  - Slab thickness must be within the Grip Range shown on the clamp.
  - Inspect and replace the Shackle as needed due to wear.



## WARRANTY CERTIFICATE

In order to validate the warranty, it is mandatory to return the attached **Warranty Certificate**, duly completed, within **eight (8)** days after purchase.

### PERIOD

The warranty starts from the date of purchase (date on the distributor's invoice).

Warranty is valid for a period of **six (6) months**.

### WARRANTY

This warranty is limited to the replacement of parts recognized as defective (excluding worn components and consumables).

The manufacturer is not responsible for any direct or indirect, material or immaterial damages caused to persons or property by failure of the machine or the non-operation of the machine.

### WARRANTY CONDITIONS

To benefit from the warranty, it is mandatory to return the Warranty Certificate (attached below), duly completed, to Abaco within eight days after purchase.

In case of failure of the machine during the warranty period, our After –Sales Service Department will inform you of the appropriate method of dealing with your claim and advise you of your nearest approved service center.

### EXCLUSIONS

Warranty does not apply for damages or failures caused by:

- Incorrect use, misuse, error in transportation, handling or maintenance.
- Wear items such as the SHACKLE are not covered unless proven defective, but not from general wear.
- Use of non-genuine parts or accessories.
- Use of incorrect specifications, i.e. stone slab thickness.