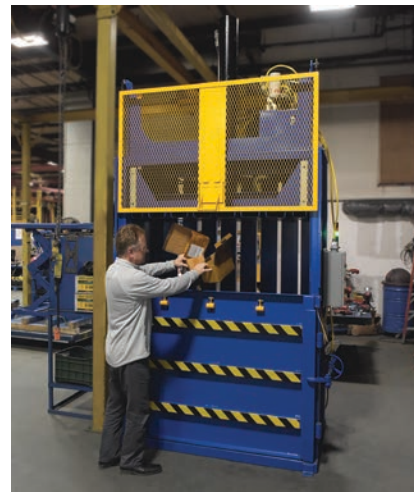


CARDBOARD BALER

FROM VESTIL MANUFACTURING

CARDBOARD BALER

- Ships in standard 53FT swing door trailer for lower freight cost.
- Compact design ships knockdown; some assembly is required.
- Centrally located compacting cylinder helps create a space saving cardboard bale.
- Well positioned control panel with PLC controls for accurate machine logic.
- Stacked status lights provide visual information:
 - Red = Baler is full
 - Yellow = In use
 - Green = Ready to use
- Semi-automatic bale ejection system.
- Bale size: 60"L x 30"D x 42"H
- Bale weight: 1100 ±100 lbs.
- 460V-3PH 6.5HP high-torque TEFC electric motor.
- Two-speed hydraulic pump yields a cycle time less than 60 seconds.
- UL listed controls.
- Fork pockets allow for positioning;
 - Usable pocket size: 7-5/8"W x 2-5/8"H
- Industrial-grade welded steel construction.
- Durable liquid painted finish.



Model Number	Overall Size (WxDxH in.)	Loading Height (in.)	Load Opening Height (in.)	Typical Bale Weight (lbs.)	Approximate Cycle Time	Wt. (lbs.)
CBB-3000-37	75 ³ / ₁₆ " x 41 ¹ / ₁₆ " x 142 ³ / ₁₆ "	51 ¹³ / ₁₆ "	22 ³ / ₄ "	1,100	60 Sec.	3,865



260-665-7586

www.vestil.com

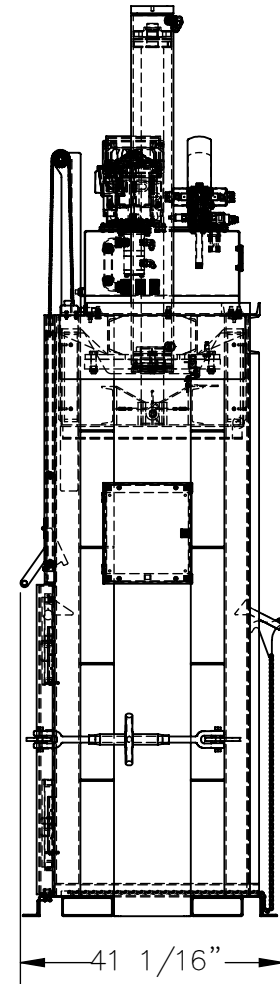
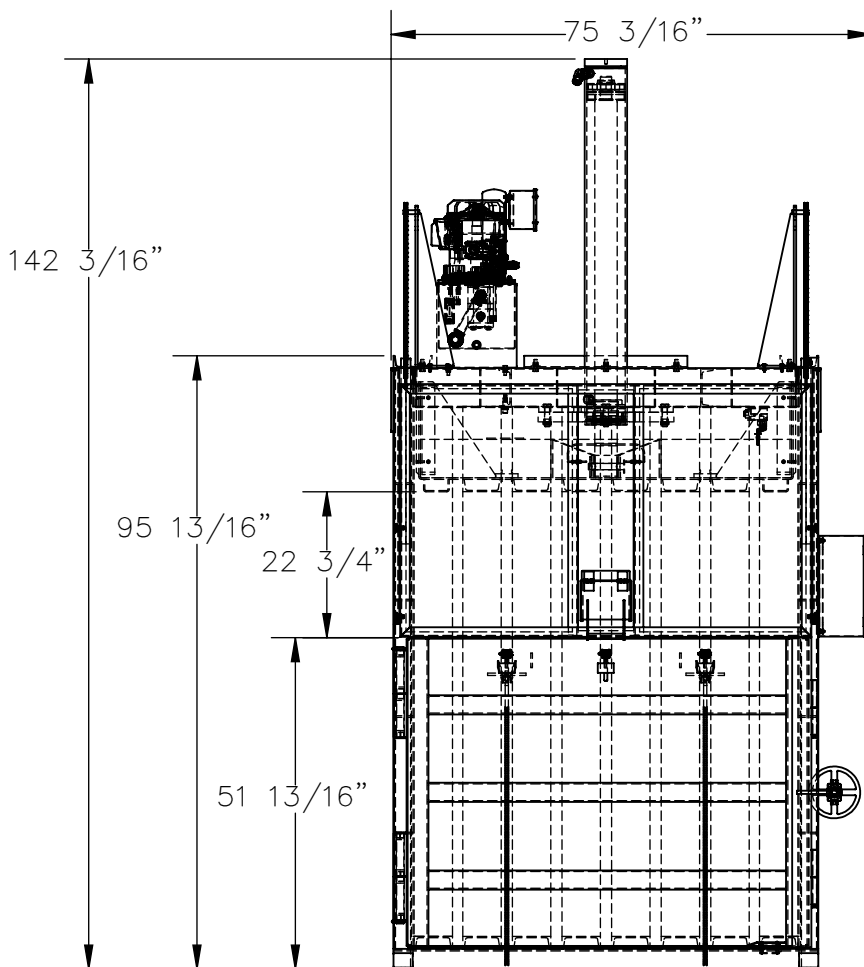
info@vestil.com

Angola, Indiana USA

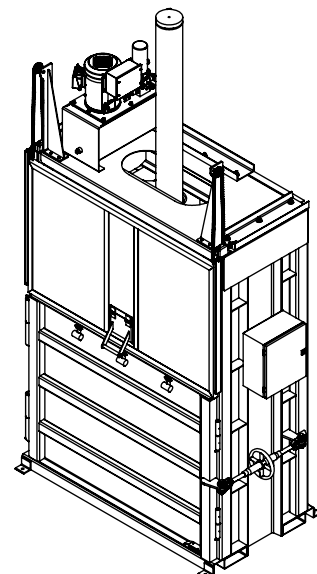
CARDBOARD BALER

FROM VESTIL MANUFACTURING

CARDBOARD BALER - CBB-3000-37



- COMPACT SHIPPING HEIGHT: 95 13/16"
- SHIPS IN STANDARD 53FT SWING DOOR TRAILER FOR LOWER FREIGHT COST
- CHAMBER LOADING HEIGHT: 51 13/16"
- CHAMBER OPENING HEIGHT: 22 3/4"
- CYCLE TIME: LESS THAN 60 SECONDS
- SEMI-AUTOMATIC BALE EJECTION SYSTEM
- BALE SIZE: 60"L x 30"D x 42"H
- BALE WEIGHT: 1100 ±100 lbs.
- OVERALL BALER WIDTH: 75 3/16"
- OVERALL BALER DEPTH: 41 1/16"
- OVERALL BALER HEIGHT: 142 3/16"
- DURABLE LIQUID PAINTED FINISH
- MODEL NUMBER CBB-3000-37



DIMENSION TOLERANCE ± 1/2"



260-665-7586

| www.vestil.com

| info@vestil.com

| Angola, Indiana USA

Bulletin: CBB-3000-37-0322