

LOW PROFILE SKID STEER **BUCKETS**

- Robust all welded steel construction
- Front cutting edge hardness 450 BRINELL
- Wear resistant cutting edge
 - Reinforced bottom plate
- Universal mounting system
 - Anti-Slip Step Guard



The universal mounting system allows the **LOW PROFILE SKID STEER BUCKETS** to be utilized in conjunction with a variety of skid steers on the market. A high strength front cutting edge resists wear and cuts through the toughest of terrain. With a reinforced bottom plate and sides, and an all welded steel construction, this bucket will perform at the highest levels. The back plate is designed to move liquid materials like concrete. Anti-slip step guard is functionally placed at the top edge of the bucket for safe exiting of the skid steer. Excellent for landscaping, farming, and residential operations. Good for handling materials such as: dirt, mulch, snow, and sand.



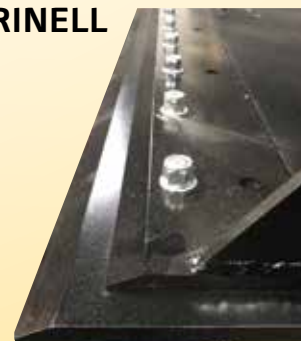
Model Number	Overall Width	Overall Height	Overall Depth	Heaped Capacity	Weight (pound)
EA-SKSB-60-LP	60"	18"	31 ⁵ / ₈ "	13 cu. ft.	321
EA-SKSB-66-LP	66"	18"	31 ⁵ / ₈ "	15 cu. ft.	336
EA-SKSB-68-LP	68"	18"	31 ⁵ / ₈ "	16 cu. ft.	351
EA-SKSB-72-LP	72"	18"	31 ⁵ / ₈ "	17 cu. ft.	366
EA-SKSB-76-LP	76"	18"	31 ⁵ / ₈ "	18 cu. ft.	376



HEAVY DUTY SKID STEER **BUCKETS**

- Impact strength with crack and wear resistance
- Base cutting edge with hole 5/8 x 6 hardness 450 BRINELL
- Bolt on cutting edge 3/4 x 8 hardness 450 BRINELL
 - Double beveled
 - Reversible
- Wear resistant side & bottom reinforcement plates hardness 450 BRINELL

Model Number	Overall Width	Overall Height	Overall Depth	Heaped Capacity	Weight (pound)
EA-SKSB-60-LPX	60"	19 ¹ / ₄ "	37 ¹ / ₄ "	14 cu. ft.	575
EA-SKSB-72-LPX	72"	19 ¹ / ₄ "	37 ¹ / ₄ "	18 cu. ft.	665

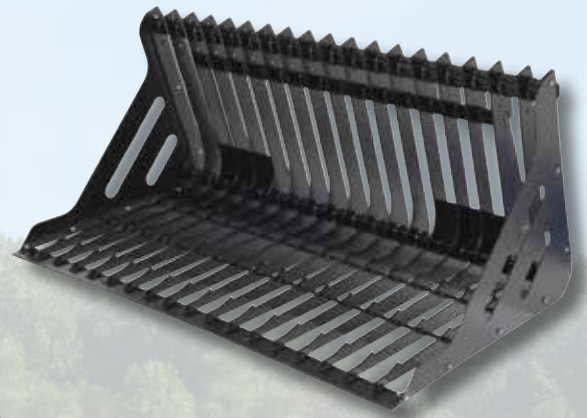


SKID STEER ROCK GRATER



- Strong leading edge for digging below the surface
- All welded steel construction for robust strength
- Robust, all welded steel construction
- Common mounting system for simple attachment
- Large capacity for heavy loads

A **SKID STEER ROCK GRATER BUCKET** works wonders in the landscaping and construction industries. With a low profile design, along with an immense structural volume, it makes loading and unloading heavy rocks as easy as ever. With a simple attachment, connecting to an existing skid steer is as quick as can be. Once in place, the bar style bottom platform is ready to transport heavy loads and minimize manual labor.



Model Number	Overall Width	Overall Height	Overall Depth	Heaped Capacity	Weight (pound)
EA-SKRG-60-LP	60"	28¼"	38½"	13 cu. ft.	466
EA-SKRG-66-LP	66"	28¼"	38½"	17 cu. ft.	535
EA-SKRG-72-LP	72"	28¼"	38½"	18 cu. ft.	586



SKID STEER GRAPPLER

- Large capacity for heavy loads
- Robust, all welded steel construction
- Common mounting system for simple attachment
- Lift and remove rocks, logs and debris with ease
- Two double acting cylinders standard
(*one double acting cylinder)



Model Number	Overall W x H	Thickness of Steel	Number of Claws	Weight (pound)
EA-SKGP-66*	66" x 41-½"	3/8"	1	585
EA-SKGP-72	72" x 41-½"	3/8"	2	650
EA-SKGP-84	84" x 41-½"	1/2"	2	970



VESTIL MANUFACTURING

Angola, Indiana 46703
 Phone (260) 665-7586 • Fax (260) 665-1339
 info@vestil.com • www.vestil.com