

POLYURETHANE Floor Locks



Cart shown with FL-LKL-5



FL-LKL-3



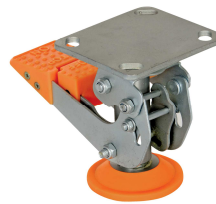
FL-LKL-4



FL-LKL-5



FL-LKH-4



FL-LKH-5



FL-LKH-6



FL-LKH-8

Spring-Loaded with thermoplastic polyurethane(TPU) on foot pad

Model Number	Suggested Caster Size	Retracted Height	Extended Height
FL-LKH-4	4"	4-5/8"	5-3/4"
FL-LKH-5	5"	5-7/16"	6-5/8"
FL-LKH-6	6"	6-7/16"	7-5/8"
FL-LKH-8	8"	8-3/8"	9-5/8"
FL-LKL-3	3"	3-5/8"	4-1/4"
FL-LKL-4	4"	4-1/2"	5-1/4"
FL-LKL-5	5"	5-1/2"	6-1/4"

Premium floor locks stabilize mobile equipment by stopping horizontal movement

Standard Features:

- Constructed of heavy duty industrial strength steel
- Zinc plated finish
- Easy lock/unlock extension pedal

FL-LKH

- TPU grip on pedals to aid in engaging floor locks
- Top plate size is 4-1/2" x 4"
- Slotted mounting hole pattern is 2-3/4" x 3-1/2" on center

FL-LKL

- Top plate size is 3-7/8" x 3-1/2"
- Slotted mounting hole pattern is 1-3/4" x 2-7/8" on center



Vestil Manufacturing Corporation
Joshua Sheets - Director of Marketing

2999 North Wayne Street, P.O. Box 570
Angola, Indiana 46703, USA

Phone: (260) 624-4330 Fax: (260) 665-1339
E-Mail: josh@vestil.com Web: www.vestil.com