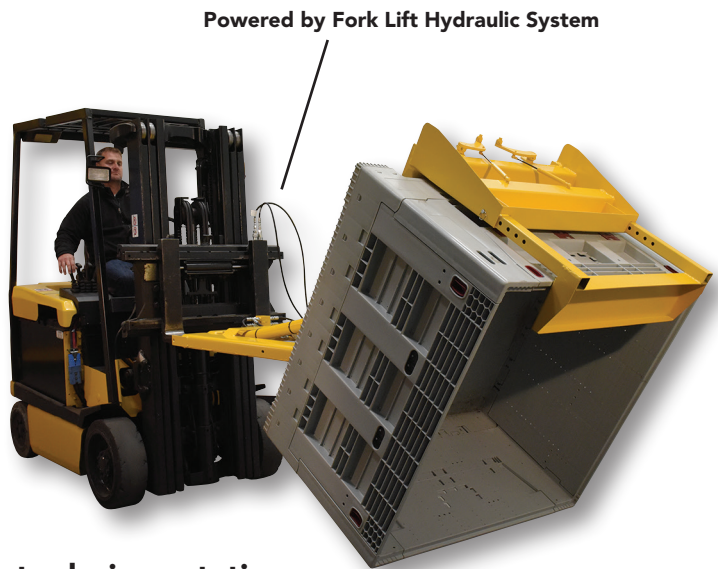
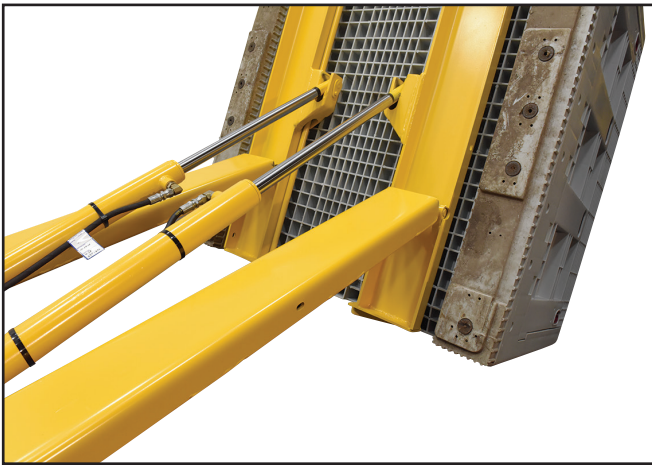
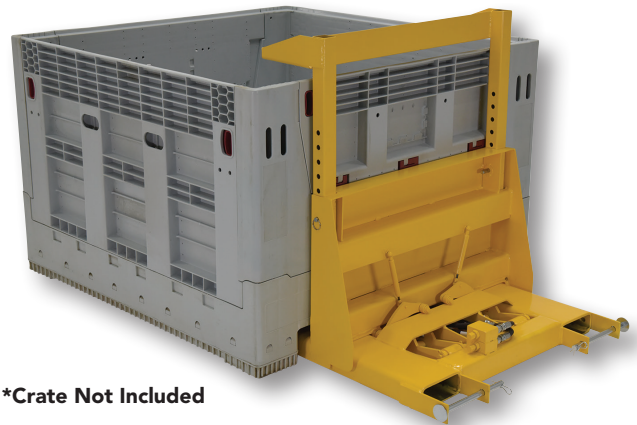


FORK TRUCK CRATE TURNER DUMPER



NEW!



Standard Features:

- Adjustable height crate lock securely grips crate during rotation.
- Simple and safe connection to a fork truck utilizing fork lift hydraulics.
- Constructed of structural steel for strength and long term durability.
- High visibility safety yellow painted finish.
- Crate not included.*

MODEL NUMBER	OVERALL SIZE (W x L x H)	FORK POCKETS (W x H x CENTER)	CAPACITY	WEIGHT (POUND)
CTD-H-TP-3000	30½" x 65½" x 30½"	5½" x 2" x 23¼"	3,000 lb.	441

When a crate needs turned, look no further than the hydraulic crate turner!



Vestil Manufacturing Corporation
Larissa Flora - Sales Representative

2999 North Wayne Street, P.O. Box 570
Angola, Indiana 46703, USA
Phone: (260) 624-4332 Fax: (260) 665-1339
E-Mail: larissa@vestil.com Web: www.vestil.com