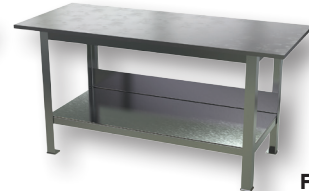


# FIXTURE WELDING TABLES

Model: FWT-P-025-3072

## Standard Features:

- Resilient design for long term use.
- Solid platform top allows the entire design to be utilized.
- Model FWT-P-025-3072 has a perforated top.
  - Holes for use with  $\varnothing 5/8"$  and 16mm tools.
- Unpainted steel finish for grounding purposes.
- Lower second shelf for storage.
- Accommodates items large and small.
- Durable steel construction.



Model: FWT-050-3072

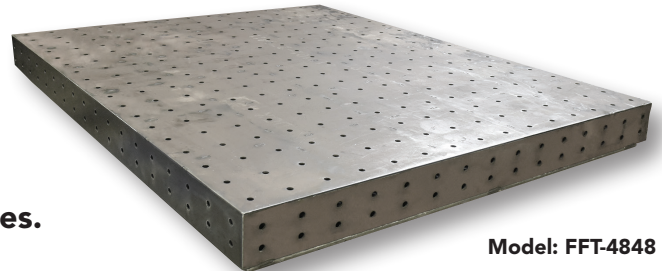
Model: FWT-100-3072

MODEL NUMBER	OVERALL SIZE (W x L x H)	DECK SIZE (W x L x H)	CAPACITY (LB)	TOP THICKNESS	WEIGHT (LB)
FWT-050-3072	30" x 72" x 36"	30" x 72" x 1/2"	8,000	1/2" SOLID	526
FWT-075-3072	30" x 72" x 36 1/4"	30" x 72" x 3/4"	8,000	3/4" SOLID	679
FWT-100-3072	30" x 72" x 36 1/2"	30" x 72" x 1"	8,000	1" SOLID	833
FWT-P-025-3072	30" x 72" x 40 5/8"	30" x 72" x 5 1/4"	8,000	1/4" PERFORATED	507

# FABRICATION FIXTURE TABLE TOPS

## Standard Features:

- Flat design for use on a variety of tables.
- Unpainted steel finish for grounding purposes.
- Accommodates items large and small.
- Consistent hole separation for multiple accessories.
- Table top hole spacing is 4" x 4".
  - Side hole spacing is 2" x 4".
- Holes for use with  $\varnothing 5/8"$  and 16mm tools.
- Robust steel construction.



Model: FFT-4848



MODEL NUMBER	OVERALL SIZE (W x L x H)	STEEL THICKNESS	FINISH	WEIGHT (LB)
FFT-4848	48" x 48" x 5 1/4"	1/4"	UNPAINTED	331
FFT-4860	48" x 60" x 5 1/4"	1/4"	UNPAINTED	398
FFT-6060	60" x 60" x 5 1/4"	1/4"	UNPAINTED	479



Vestil Manufacturing Corporation  
Larissa Flora - Sales Representative

2999 North Wayne Street, P.O. Box 570  
Angola, Indiana 46703, USA

Phone: (260) 624-4341 Fax: (260) 665-1339  
E-Mail: larissa@vestil.com Web: www.vestil.com